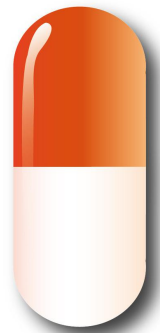


# Capsule Polisher W/Sorter

## C&C 100A



## Capsule Polisher W/Sorter

Automatic Capsule Polisher model **C&C100A** with empty shell sorter designed to clean and polish filled capsules through vacuum, rotary brushing and dust extraction.

All stainless steel(316L)housing with GMP approved contact parts. Dismantling and removal of the cleaning brush is quick and simple for ease of cleaning.

Fitted with an empty capsule sorter which removes unfilled shell prior to the inlet of the polisher

The product inlet and outlet positions can be adjusted to suit the capsule discharge height.

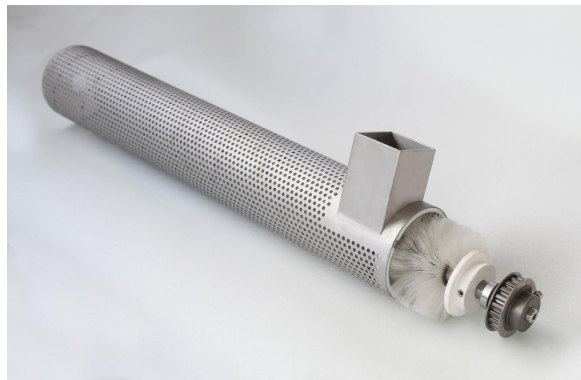
Mounted on a stand with heavy duty castors with anti-vibration mounts.



C&amp;C100A

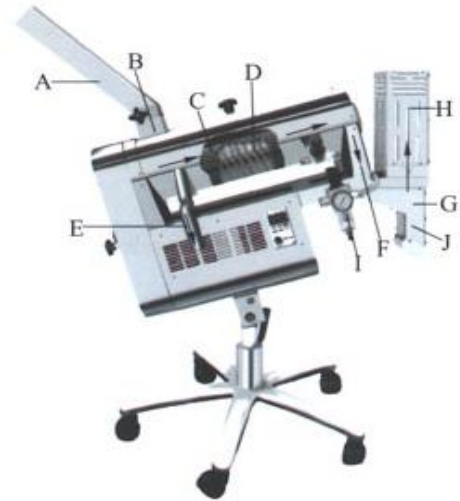
**Features:**

- Contact parts 316L.
- High speed: up to 300,000 capsules /hr.
- Main shaft blowing:blowing air with brush rolling bring perfect capsule polishing performance to you.
- Detachable brush on main shaft can be thoroughly cleaned.
- Automatically sort less dosage, empty, fractured and cap-body separated capsule.
- Adjustable inlet and outlet feed height to suit the capsule discharge height.
- Mounted on a stand with heavy duty castors with anti-vibration mounts.
- Fast-joint system to ensure safe and quick disassembly and assembly.
- cGMP compliant.



**Working Principles:**

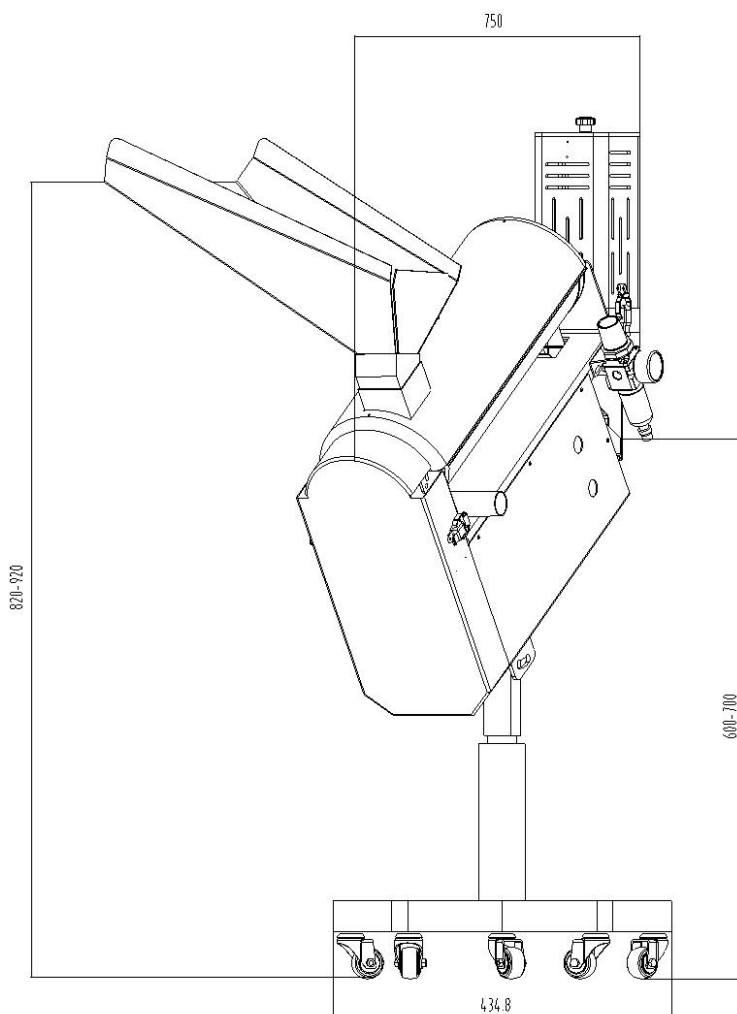
- From the capsule filling machine, the finished capsules are fed into chute A.
- The turning brush rotates the capsules from the B to C cylinder.
- Within the net cylinder, brush D polishes and dedusts the capsules; the loose pieces and empty capsules are retrieved by a vacuum suction E.
- The brush conveys the capsules to the outlet of cylinder F.
- In the sorter segment G clean compressed air collects low weight capsules, loose pieces and empty capsules to H collector.
- The pressure of the compressed air is shown on the filter decompressed valve meter, which can be adjusted at different requirements.
- The qualified capsules are ejected from outlet J.



**New function: Main shaft blowing:blowing air with brush rolling bring perfect capsule polishing performance to you.**



**Dimensions:**



Technical Data	C&C100A
Max Output	Up to 300,000 capsules /hr
Capsule sizes	00#,0#, 1#, 2#, 3#, 4#
Electrical	220 / 110V 1pH 50/60Hz
Contact part	SS316L
Compressed Air	0.25m3/min, 0.3Mpa
Vacuum	2.7m3/min
Ambient temperature	22 - 24 Deg C.
Relative Humidity	40% RH
Overall dimension	1150x600x(870-1000)mm
Overall	40 kg

SaintyCo also offer:

Encapsulation Solutions

Tablet Compression Solutions

Coating Systems

Cartoning Systems

Blister Packing Solutions

