

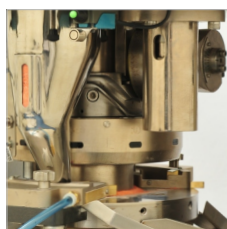


Salient Features

- » Compact model with a small foot print.
- » Sturdy frame structure and aesthetically built
- » Can be foot mounted as well as mounted over a Cabinet/stand
- » Machine built in line to the cGMP norms with compression zone and drive zone with physical separation
- » Maximum rated force of 60 Kn and continuous operation at 50 Kn
- » User friendly touch screen function with PLC control
- » Ideal for product development/small volume production in industry and research institutes/colleges.
- » Compatibility to Produce single layer tablets
- » Precision machined turret with ELNP surface treatment providing protection against corrosion/rusting
- » Gravity feed-frames with vacuum suction ports to avoid any mixing of layers.
- » Available with Load-cell to measure 1st layer compression force and 2nd layer compression force
- » 1st layer sampling at any speeds of turret within the machine speed limit
- » Capability to perform hard 1st layer tablet sampling.
- » Control of tablet parameters from outside the machine
- » Upper punch penetration at 1st layer variable from 2.00mm to 10.00mm
- » Main motor of 3HP drives a heavy duty Reduction gearbox with direct turret drive
- » ACVFD for the main motor for speed control
- » Safety limit switches for all guards
- » CE certified for safety and electrical.



5.4" Touch Type HMI (Optional)



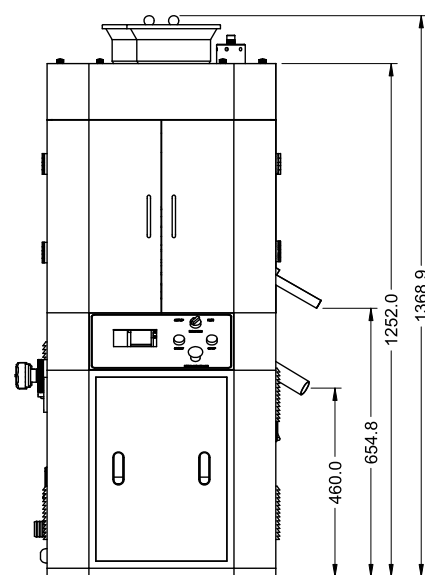
Tool Safe Overload System



Tablet Parameter Control

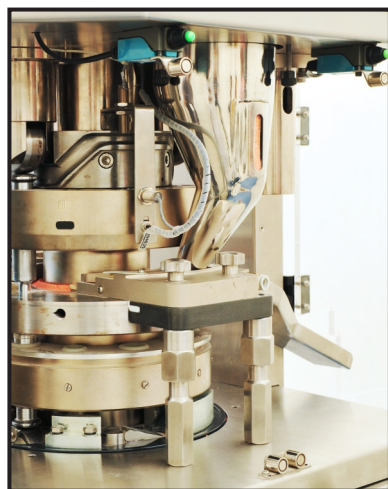
TECHNICAL SPECIFICATIONS

Model	EP - 200L		
Tablet Press Type	Bi-Layer Rotary Tablet Press		
Number of Stations	9	11	5 + 5
Tooling	EU-D	EU-B	EU-D + EU-B
Tablet Output (Tab/hr) (Max.)*	16,200	19,800	9,000
Turret Speed	10 - 30 RPM		
Tablet Diameter (Max.)	22 mm	16 mm	22 / 16 mm
Filling Cam Depth	12 / 16 mm	8 / 12 / 17 mm	12 / 16 mm
Tablet Thickness (Max.)	8 mm		
Upper Punch Insert	Up to 10 mm		
1 st Layer Compression (Max.)	Rated 30 kN (3 Ton) - Continuous Up to 20 kN (2 Ton)		
Bi Layer Compression (Max.)	Rated 60 kN (6 Ton) - Continuous up to 50 kN (5 Ton)		
Feeder	Gravity Feeder		
Machine Footprint – Main Machine	690 x 900 mm		
Machine Height (without Hopper)	1252 mm		
Machine Height (with Hopper)	1370 mm		
Net Weight	730 kg		
Gross Weight	840 kg		



FRONT VIEW

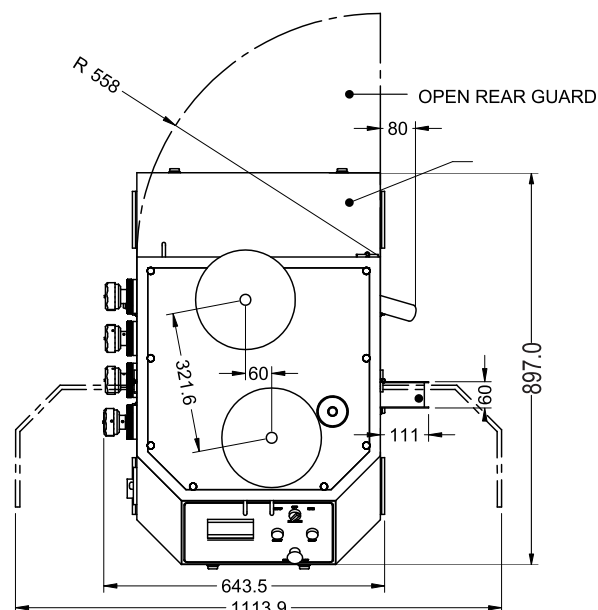
Machine output mentioned are rated outputs and can vary depending on the product characteristics, Tablet dimensions / shape / size, depth of fill, ambient conditions, operator skill and machine maintenance.



Gravity Feeder



Direct Drive to Turret



TOP VIEW



SERVICE SUPPORT

- ▶ Ahmedabad
- ▶ Chennai
- ▶ Hyderabad
- ▶ Bengaluru
- ▶ Delhi
- ▶ Indore
- ▶ Chandigarh
- ▶ Goa
- ▶ Sikkim



Parle Elizabeth Tools Pvt. Ltd.

329/P, Behind J.K Weigh Bridge, Opp. Harsha Engineering,
Changodar, Ahmedabad - 382213 Tel: +91 7600017570
info@parle-elizabeth.com www.parle-elizabeth.com

BRANCH OFFICE

- ▶ Ahmedabad
- ▶ Delhi
- ▶ Pinjore
- ▶ Bengaluru
- ▶ Goa
- ▶ Hyderabad
- ▶ Chennai