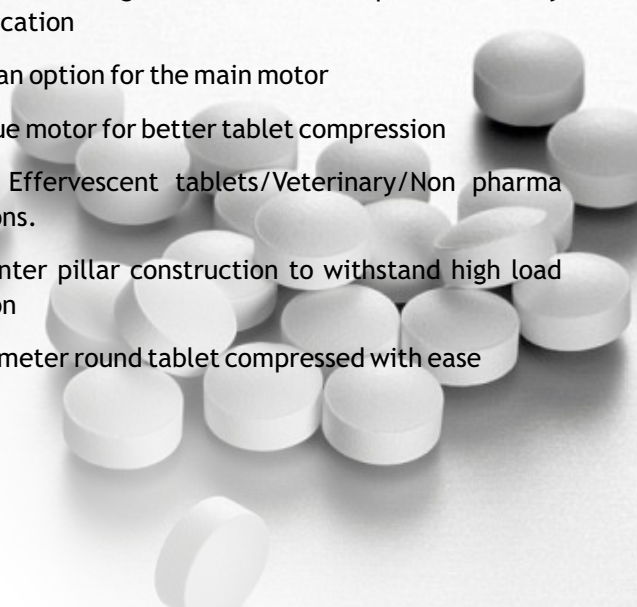


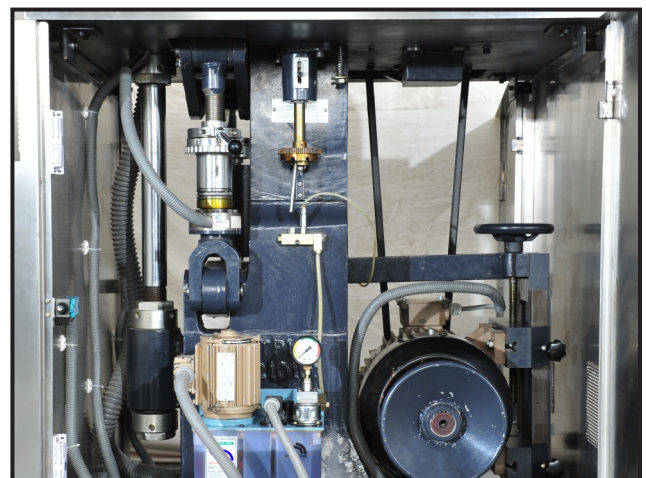


Salient Features

- » GMP model with 20 station in "D" tooling
- » Max. compression force of 100KN
- » 16 station (optional) available in D tooling with 100KN compression force
- » Square model with GMP construction.
- » Optional electro magnetic clutch for Non pharma / heavy duty application
- » ACVFD as an option for the main motor
- » High torque motor for better tablet compression
- » Ideal for Effervescent tablets/Veterinary/Non pharma applications.
- » Sturdy center pillar construction to withstand high load application
- » 25mm diameter round tablet compressed with ease



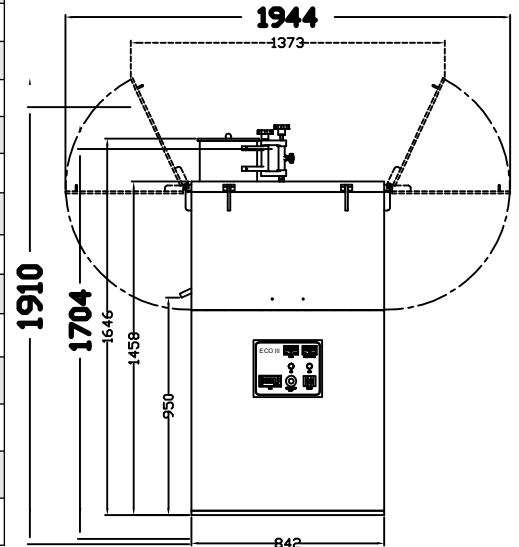
Main Compression with upper punch penetration



Sturdy Base

TECHNICAL SPECIFICATIONS

Model	ECO - III			
Tablet Press Type	Single Rotary			
Number of Stations	16	20	23	27
Tooling	EU - D	EU - D	EU - BD	EU - B
Tablet Output (Tab/hr) (Max.)*	48,000	60,000	69,000	81,000
Turret Speed	10 - 50 RPM			
Tablet Diameter (Max.)	25 mm			
Filling Cam Depth	20 mm			
Tablet Thickness (Max.)	8 mm			
Upper Punch Insert	1.5 to 8.0 mm			
Main Pressure (Max.)	100 kN (10 Ton)		60 kN (6 Ton)	
Main Compression Roller Diameter	200 mm			
Feeder	Gravity Feeder			
Motor Capacity	5HP, 960 RPM, 415 V, 3 Phase, 50/60 Hz			
Machine Footprint – Main Machine	1100 x 893 mm			
Machine Height (without Hopper)	1458 mm			
Machine Height (with Hopper)	1704 mm			
Net Weight	1450 kg			
Gross Weight	1800 kg			



FRONT VIEW

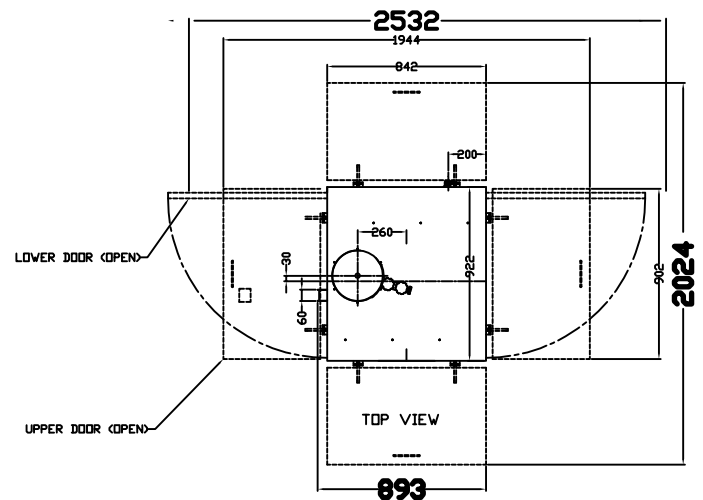
Machine output mentioned are rated outputs and can vary depending on the product characteristics, Tablet dimensions / shape / size, depth of fill, ambient conditions, operator skill and machine maintenance.



IPPC Panel for AFR Model



HMI Panel for Standard Model



TOP VIEW



Parle Elizabeth Tools Pvt. Ltd.

329/P, Behind J.K Weigh Bridge, Opp. Harsha Engineering,
Changodar, Ahmedabad - 382213 Tel: +91 7600017570
info@parle-elizabeth.com www.parle-elizabeth.com

SERVICE SUPPORT

- ▶ Ahmedabad
- ▶ Chennai
- ▶ Hyderabad
- ▶ Bengaluru
- ▶ Delhi
- ▶ Indore
- ▶ Chandigarh
- ▶ Goa
- ▶ Sikkim

BRANCH OFFICE

- ▶ Ahmedabad
- ▶ Delhi
- ▶ Pinjore
- ▶ Bengaluru
- ▶ Goa
- ▶ Hyderabad
- ▶ Chennai