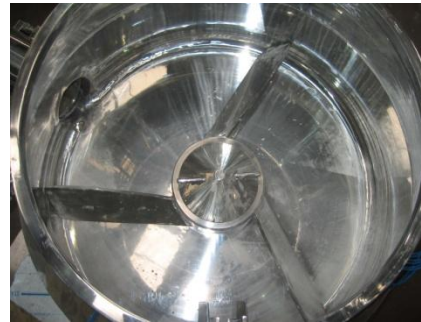


High Speed Mixer

KSM-50



● Application

The internal vessel is polished to ensure smooth movement of ingredients while enabling various processes including mixing, dispersing and assembly of medicine, food, chemical products, ceramics and aluminum etc, in short time significantly improve productivity.

● Principle

At cylindrical vessel impeller for blending and spraying and knife for separation are install and by high speed rotation blending of content and crushing of granulated matter by binding liquid are carried out concurrently. And intended product is produced by object optimal for mixing liquid binding fluid to powder.

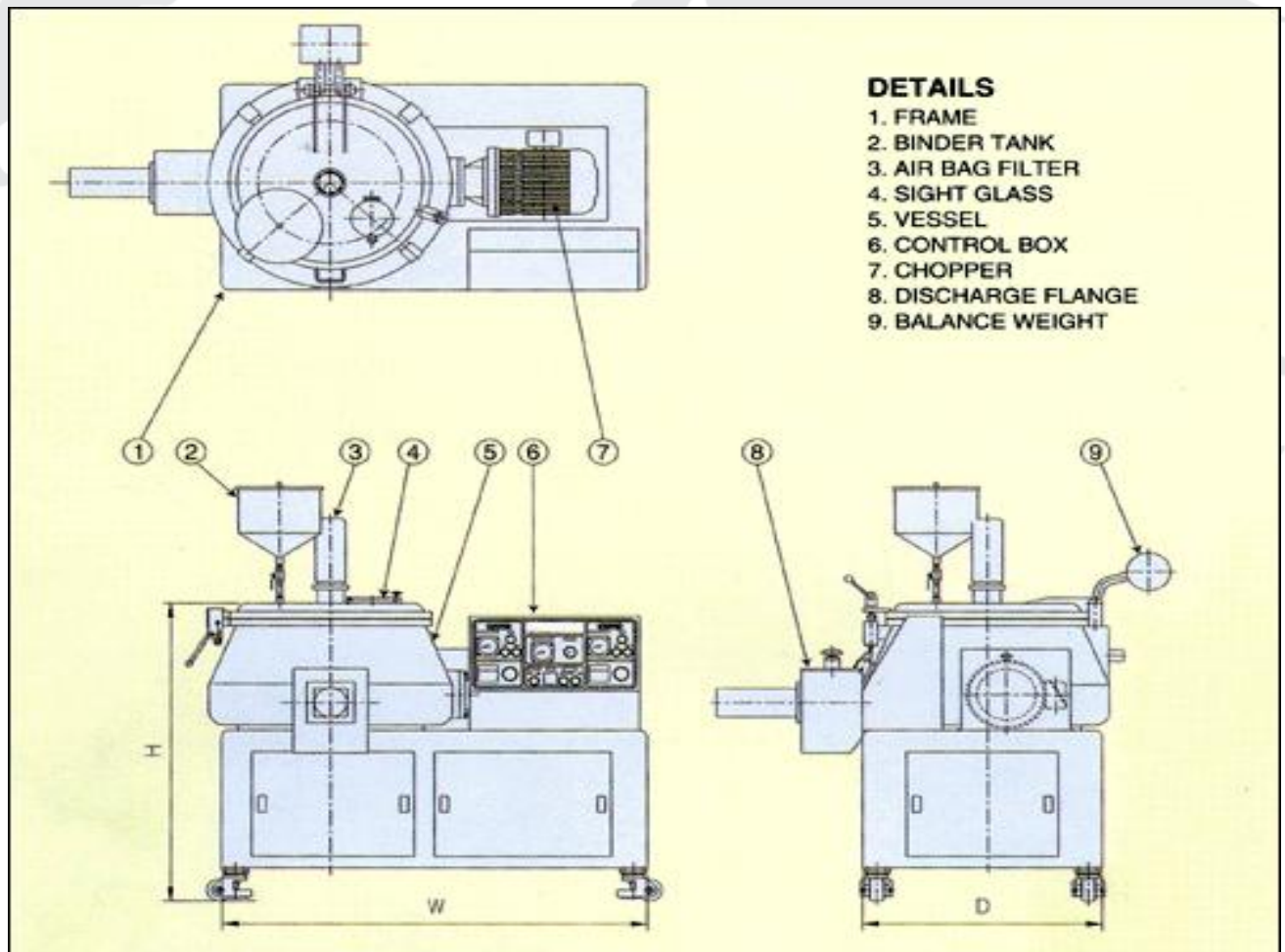
● Characteristics and strongpoint

- It is possible to carry out blending, dispersing and assembly in one process and it prevents sticking of material at inside and disposes of it effectively.
- Within short time dry type, wet type mixing and liquid spraying mixing are carried out, and it is installed with chopper and is possible to carry out crushing and granulating, and by adjusting times of rotation of chopper size of granule may be decided.
- By minimizing gap between main impeller and bottom complete discharge of content is made possible, and by means of controlling system condition of machine can be monitored.
- Inside the vessel is protected from pollutants through electrolytic polishing.

High Speed Mixer

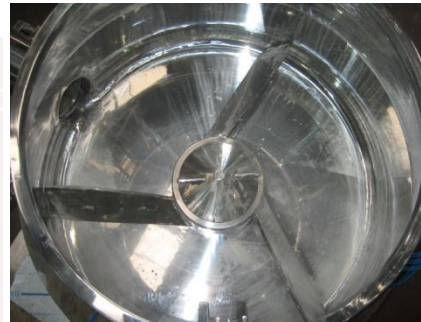
Specification

Model	Full	Work	Agitator		Chopper		Dimension		
	CAPY	CAPY	Drive Motor	Speed (RPM)	Drive Motor	Speed (RPM)	W	D	H
KSM-50	120ℓ	50ℓ	7.5KW	0~220	3.7KW	0~3400	1200	1100	1100
KSM-100	240ℓ	100ℓ	11KW	0~120	6.5KW	0~3400	1800	1900	1850
KSM-200	455ℓ	200ℓ	15KW	0~120	7.5KW	0~3400	2100	2200	2200
KSM-300	670ℓ	300ℓ	22KW	0~105	11KW	0~3400	2250	2500	2960
KSM-400	850ℓ	400ℓ	30KW	0~90	11KW	0~3400	2250	2700	2960
KSM-500	1050ℓ	500ℓ	37KW	0~80	11KW	0~3400	2430	2900	3100
KSM-600	1250ℓ	600ℓ	45KW	0~75	11KW	0~3400	2580	3100	3350



High Speed Mixer

KSM-100



● Application

The internal vessel is polished to ensure smooth movement of ingredients while enabling various processes including mixing, dispersing and assembly of medicine, food, chemical products, ceramics and aluminum etc, in short time significantly improve productivity.

● Principle

At cylindrical vessel impeller for blending and spraying and knife for separation are install and by high speed rotation blending of content and crushing of granulated matter by binding liquid are carried out concurrently. And intended product is produced by object optimal for mixing liquid binding fluid to powder.

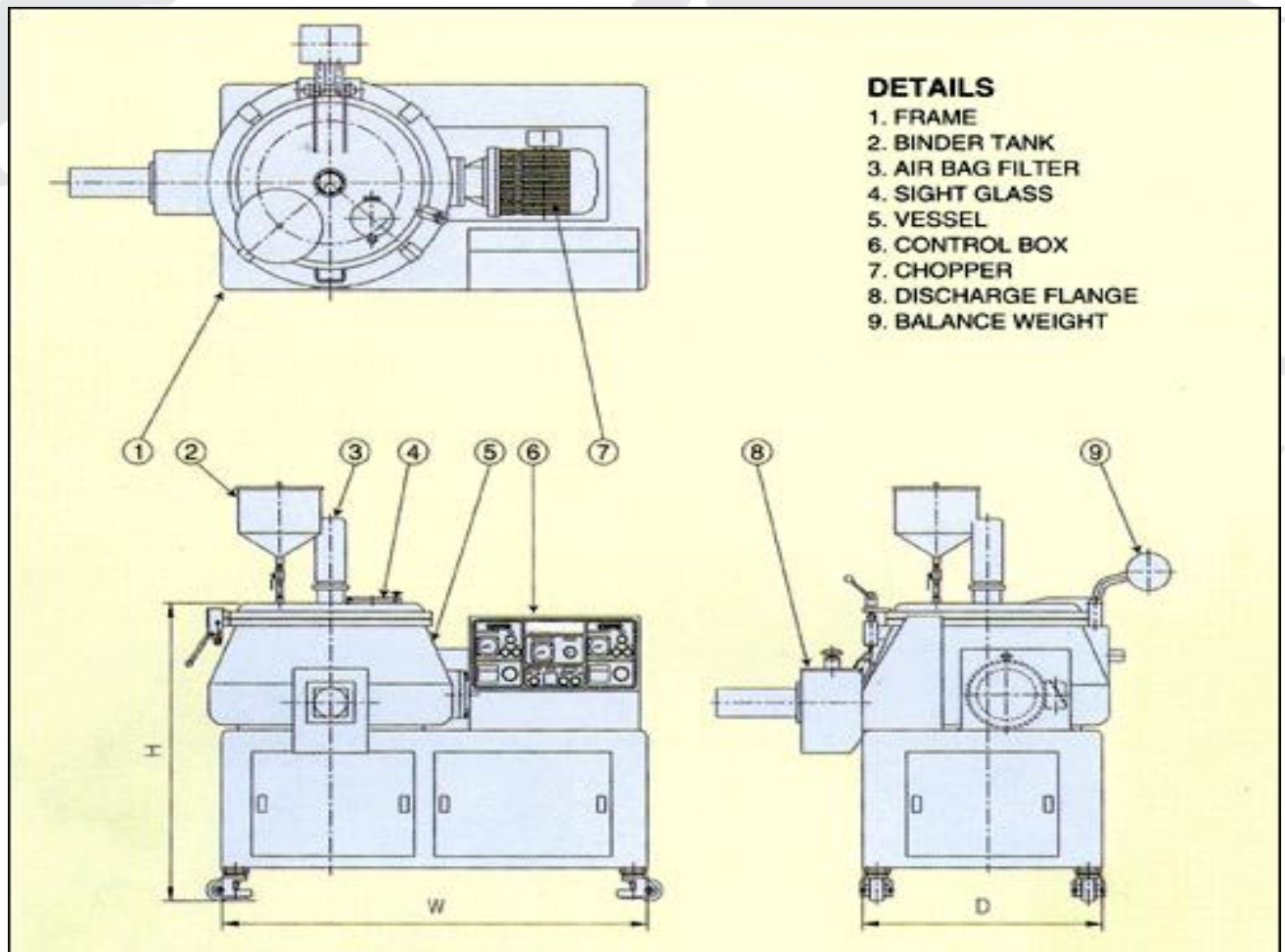
● Characteristics and strongpoint

- It is possible to carry out blending, dispersing and assembly in one process and it prevents sticking of material at inside and disposes of it effectively.
- Within short time dry type, wet type mixing and liquid spraying mixing are carried out, and it is installed with chopper and is possible to carry out crushing and granulating, and by adjusting times of rotation of chopper size of granule may be decided.
- By minimizing gap between main impeller and bottom complete discharge of content is made possible, and by means of controlling system condition of machine can be monitored.
- Inside the vessel is protected from pollutants through electrolytic polishing.

High Speed Mixer

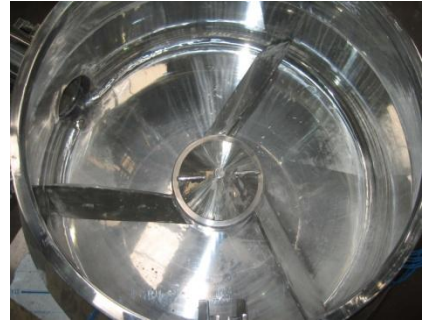
Specification

Model	Full	Work	Agitator		Chopper		Dimension		
	CAPY	CAPY	Drive Motor	Speed (RPM)	Drive Motor	Speed (RPM)	W	D	H
KSM-50	120ℓ	50ℓ	7.5KW	0~220	3.7KW	0~3400	1200	1100	1100
KSM-100	240ℓ	100ℓ	11KW	0~120	6.5KW	0~3400	1800	1900	1850
KSM-200	455ℓ	200ℓ	15KW	0~120	7.5KW	0~3400	2100	2200	2200
KSM-300	670ℓ	300ℓ	22KW	0~105	11KW	0~3400	2250	2500	2960
KSM-400	850ℓ	400ℓ	30KW	0~90	11KW	0~3400	2250	2700	2960
KSM-500	1050ℓ	500ℓ	37KW	0~80	11KW	0~3400	2430	2900	3100
KSM-600	1250ℓ	600ℓ	45KW	0~75	11KW	0~3400	2580	3100	3350



High Speed Mixer

KSM-200



● Application

The internal vessel is polished to ensure smooth movement of ingredients while enabling various processes including mixing, dispersing and assembly of medicine, food, chemical products, ceramics and aluminum etc, in short time significantly improve productivity.

● Principle

At cylindrical vessel impeller for blending and spraying and knife for separation are install and by high speed rotation blending of content and crushing of granulated matter by binding liquid are carried out concurrently. And intended product is produced by object optimal for mixing liquid binding fluid to powder.

● Characteristics and strongpoint

- It is possible to carry out blending, dispersing and assembly in one process and it prevents sticking of material at inside and disposes of it effectively.
- Within short time dry type, wet type mixing and liquid spraying mixing are carried out, and it is installed with chopper and is possible to carry out crushing and granulating, and by adjusting times of rotation of chopper size of granule may be decided.
- By minimizing gap between main impeller and bottom complete discharge of content is made possible, and by means of controlling system condition of machine can be monitored.
- Inside the vessel is protected from pollutants through electrolytic polishing.

High Speed Mixer

Specification

Model	Full	Work	Agitator		Chopper		Dimension		
	CAPY	CAPY	Drive Motor	Speed (RPM)	Drive Motor	Speed (RPM)	W	D	H
KSM-50	120ℓ	50ℓ	7.5KW	0~220	3.7KW	0~3400	1200	1100	1100
KSM-100	240ℓ	100ℓ	11KW	0~120	6.5KW	0~3400	1800	1900	1850
KSM-200	455ℓ	200ℓ	15KW	0~120	7.5KW	0~3400	2100	2200	2200
KSM-300	670ℓ	300ℓ	22KW	0~105	11KW	0~3400	2250	2500	2960
KSM-400	850ℓ	400ℓ	30KW	0~90	11KW	0~3400	2250	2700	2960
KSM-500	1050ℓ	500ℓ	37KW	0~80	11KW	0~3400	2430	2900	3100
KSM-600	1250ℓ	600ℓ	45KW	0~75	11KW	0~3400	2580	3100	3350

