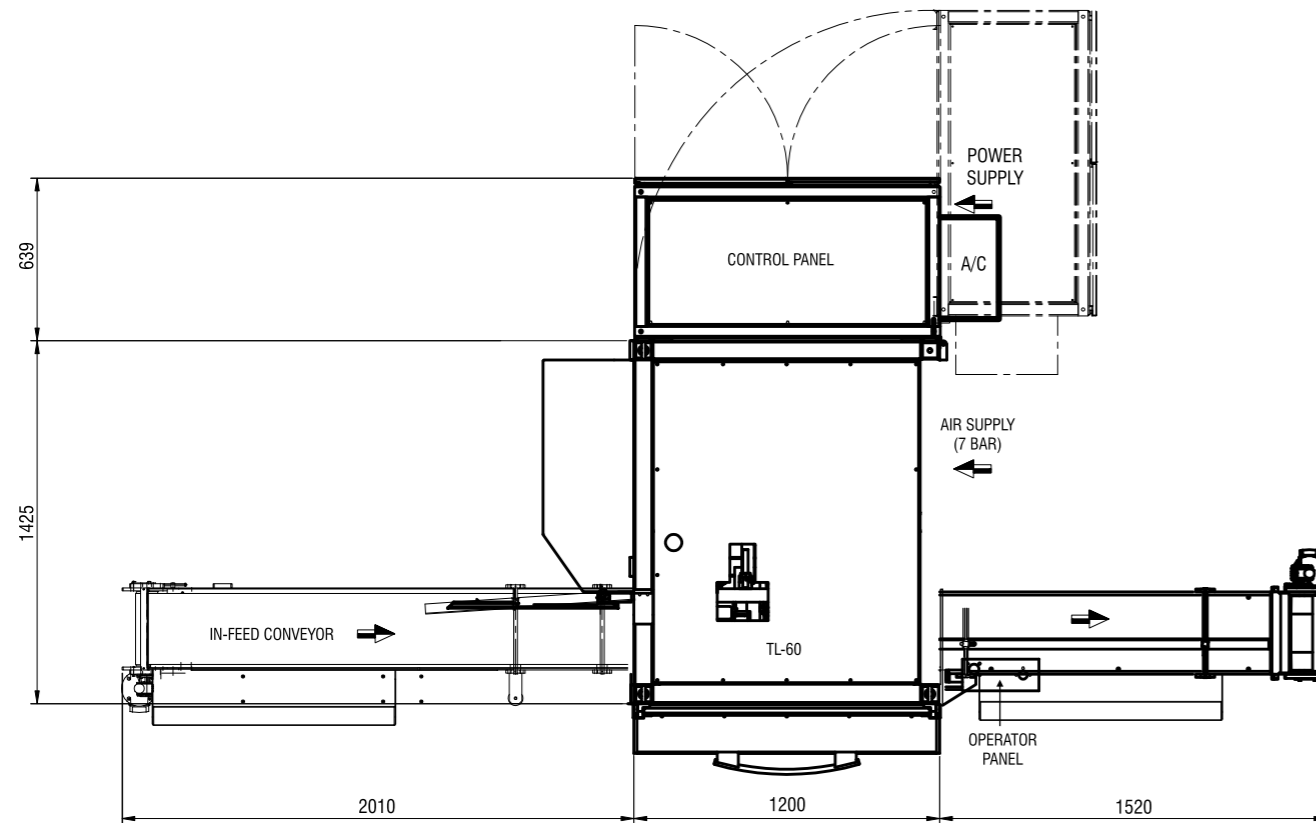


# Tube Labeling Machine **TL-60**

Layout



- All dimensions are in mm
- Minimum roof height required : 3.5 m



# Tube Labeling Machine

## TL-60

High Speed, Highly Accurate Full Wrap Around and Oriented Half Labeling On Plastic Cosmetic Tubes

This high speed (upto 65 tubes/min), highly precise labeling machine is suitable for:

- 365° label wrap around with and without cap options
- Oriented labeling by sensing eye mark on the tube OR by sensing flip notch of flip-top caps

### Machine Description

The 12 mandrel turret of the TL-60 is indexed by a servo motor and the functions performed at various stations are:

2 station for tube loading on the mandrel

- Corona unit (optional)
- Servo motor driven pre-orientation of tube by sensing printed eye mark on the tube  
**OR**
- Servo motor driven pre-orientation of tube by sensing flip notch of flip-top caps (optional)
- Labeling with servo motor driven tube rotation
- Servo motor operated indigenously designed efficient label dispensing unit
- Tube unloading from the mandrel onto out-feed flat belt conveyor
- 'GOOD TUBE / BAD TUBE' selection
- In-feed conveyor for tube feeding
- Modem for remote diagnostics (optional)**



### Features and Benefits

- Rigid construction and simple operation
- Quick & easy change-over for different tube sizes
- State-of-the-art controller system
- 'TUBE TEST MODE' to make the machine settings with minimum wastage
- Recipe feature for fast recall of different tube settings
- Exhaustive diagnostic features and alarm system

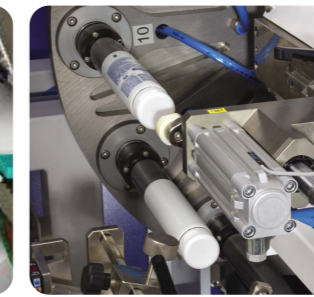
### Options

- Pre-Orientation of tubes with respect to flip notch of flip-top caps
- Pre-Treatment of tubes with Corona
- Modem – For remote diagnostics

### Operations



Tube Loading Station 1



Tube Loading Station 2



Pre-orientation



Tube Labeling



Tube Unloading

### Technical Specifications

- Speed\* : 365° labeling – Upto 65 tubes per minute  
: Orientated labeling – Upto 65 tubes per minute
- Tube Diameter : Dia 19 mm to 60 mm
- Tube Length with Cap : 80 mm to 240 mm
- Positioning accuracy of label with orientation : +/-1mm Radially
- Electrical Connection : 3 x 415 Volts AC x 50 Hz, 14 KW
- Pneumatic Connection : 6 to 8 bar. Dust, Water and Oil free
- Air Consumption : 330 Lpm
- Memory for Program Storage : Upto 500 recipes
- Operation : Fully automatic
- Machine dimensions : Length 4.4m / Depth 2.2m / Height 2.2m
- Standard color : Combination of RAL 9016 white and blue
- Layout : Tube flow from left to right



Labeling Unit

### Applications



Full wrap around Labeling



Half Labeling with respect to eye mark  
OR Flip notch of flip-top cap

\*Depends upon tube diameter and label substrate. Due to continual improvements Specifications and features are subjected to change without notice

\*Graphics shown on the various tubes are the property and trademark of the respective brands