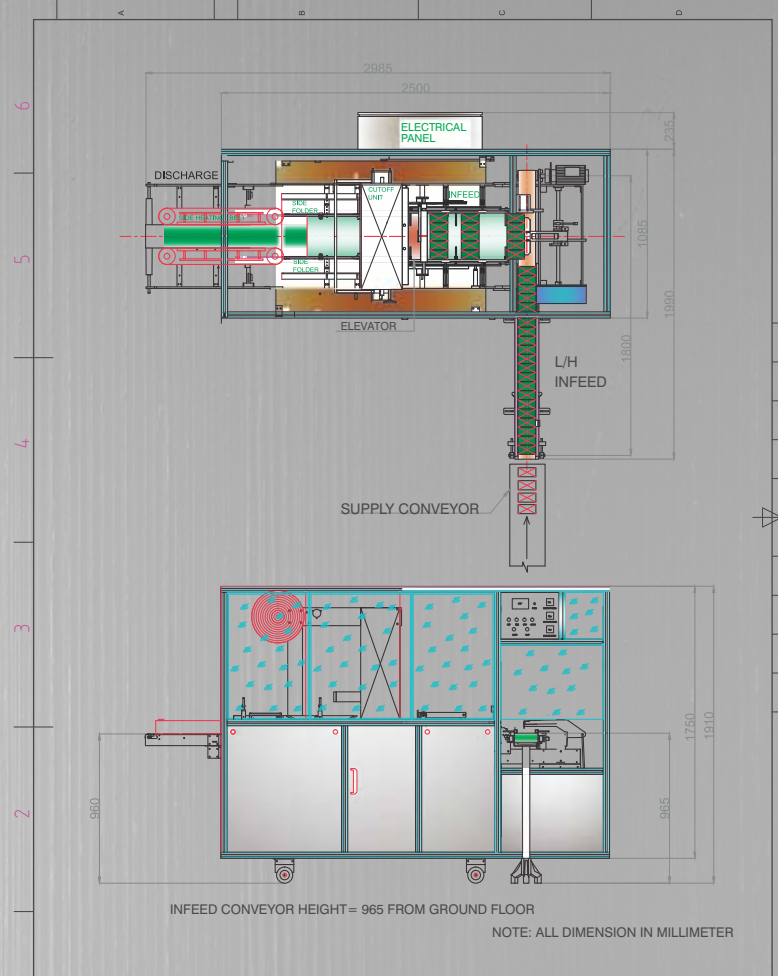




KHOSLA
listen innovate deliver



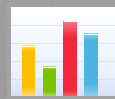
THIS DRAWING IS THE PROPERTY OF KHOSLA MACHINES PVT. LTD. AND MUST NOT BE LOANED, COPIED, TRANSMITTED IN WHOLE OR IN PART BY ANY MEDIUM OR USED FOR MANUFACTURING OR TENDERING PURPOSES WITHOUT THEIR WRITTEN CONSENT.



Hi-Speed



Link up



Report



Touch Screen



Servo System



KHOSLA
listen innovate deliver

KHOSLA MACHINES PVT. LTD.

B-17, Industrial Area, Phase-2,
Mohali 160051, Punjab, INDIA.

TEL : + 91 172 2225587, 2227324

FAX : + 91 172 2271146

Website : www.khoslamachines.com

E-mail : info@khoslamachines.com

Technical specifications may vary because of continuous development

COM55

Collation Overwrapping
Machine (Bundling Machine)

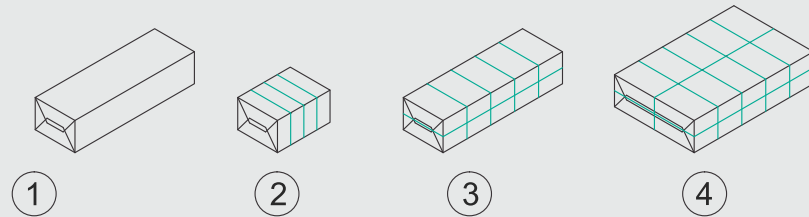


COM55: The Most Versatile Machine in the market for all your collation needs!

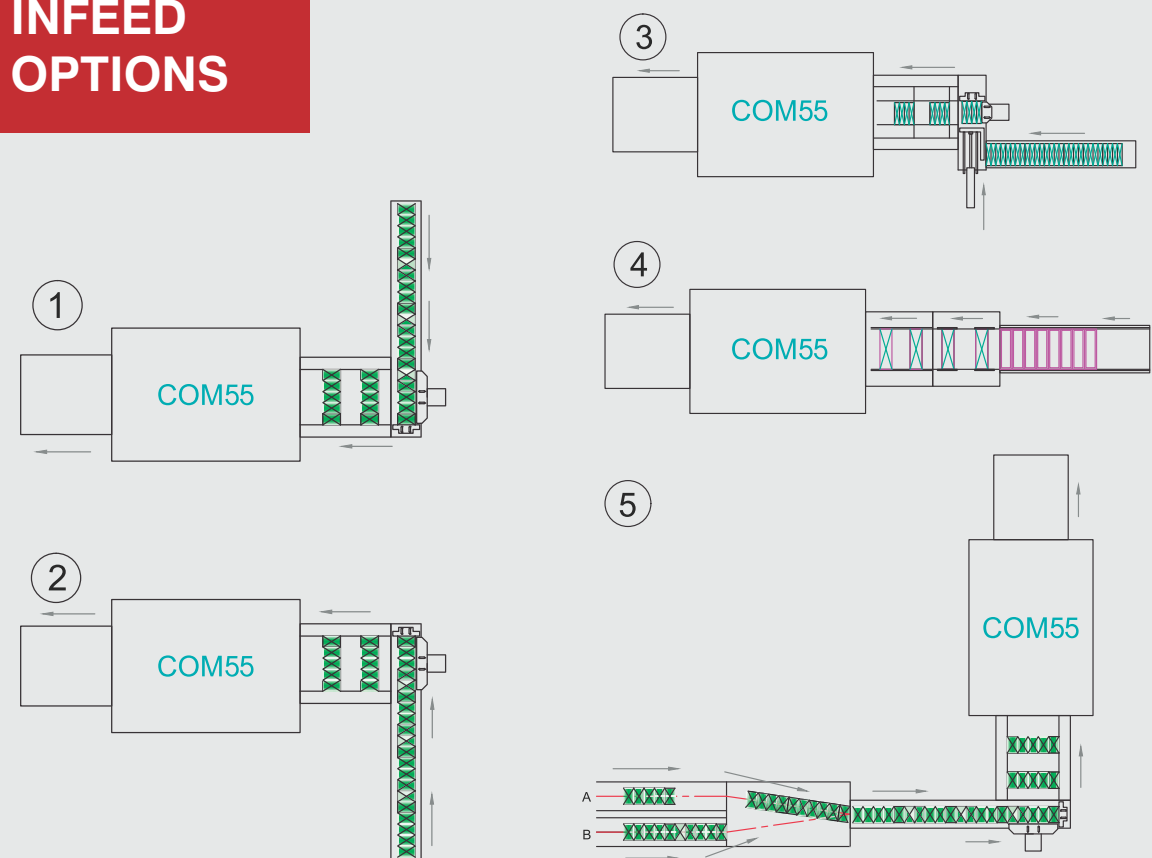
COM55 is an over wrapping machine that first collates products in a single layer or double or triple layers vertically stacked over each other and then over wraps them with a suitable heat sealable wrapper to give aesthetically pleasing packet with envelop type side folds.

COM55 is a robust machine that is capable of giving high performance with least downtimes. The machine uses ingenious and well designed mechanical cam movements and linkages. Film cutting is the only pneumatic operation. This makes this machine not only faster but also more economical to run in comparison with other machines because of compressed air saving.

COLLATION OPTIONS



INFEED OPTIONS



SALIENT FEATURES:

- Easy adjustments by hand wheels or from HMI for most of the settings required for size change.
- Options of single, double or triple layered collation of products.
- Large options of infeed conveyor system to suit any upstream requirement for automated linkup. Company specializes in giving customized solutions to suit the plant layout.
- Servo driven wrapper feed with print registration.
- Vacuum belt assisted guidance of wrapper.
- Multiple layering by means of programmable linear servo drive.
- Continuously moving heated side belts with independent drive for side sealing.
- Aesthetic safety guarding.



MACHINE SPECIFICATIONS :

Max. Collation length	: 315 mm
Max. Collation width	: 150 mm
Max. Collation height	: 120 mm (combinations of two max. dimensions may not be possible. Requirement of sizes beyond the specifications may be considered on request)
Speed	: Max. 85 strokes of in feed pusher or 45 packs per minute, whichever is less.
Power requirement	: 4 KW
Air requirement	: 5 kg/cm ²