



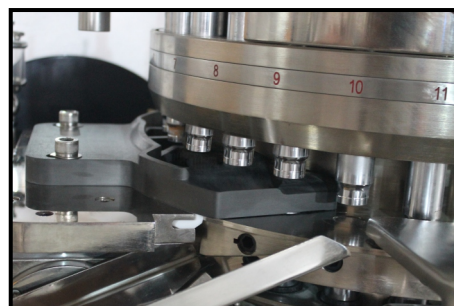
## Salient Features

- » Ideally suited for Medium scale production.
- » Fully cGMP compliant Tablet Press in terms of Design, Metallurgy, Easy Accessibility etc.
- » Precision machined Electroless Nickel Plated Turret with double thrust bearing & lower punch seal.
- » Turret drive through robust external worm & worm gear system.
- » Large capacity motor ensures no jerks/slippages even when compressing large tablets.
- » Double walled Cams design for easy maintenance & change over.
- » Main Motor control through AC Variable Frequency Drive.
- » Main Compression rollers tonnage capacity:  
D tooling: 100 kN (10 Ton)  
B & BB tooling: 60 kN (6 Ton)

- » Double Paddle Force Feeder with Clockwise & Counter Clockwise paddle rotation.
- » Color Touch Screen HMI with Turret & Feeder RPM Control & PLC as standard feature.
- » Tablet Parameter Control from front of the machine through Dial gauges for Main Compression & Fill Depth control.
- » Consolidated Electrical Control Panel is mechanically isolated.
- » Auto Lubrication for center pillar, upper & lower rollers.
- » Feeder Motor control through AC Variable Frequency Drive (Optional)
- » Bi-Layer attachment with hard tablet sampling of 1st layer through eccentric lever (Optional)



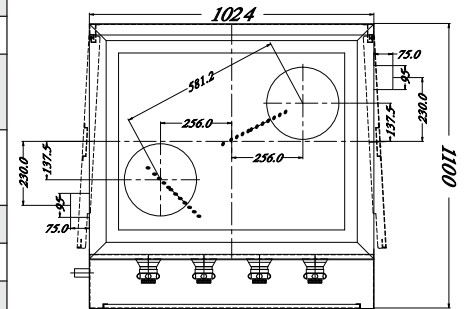
Upper Compression  
with Force Feeder Zone



Gravity Feeder

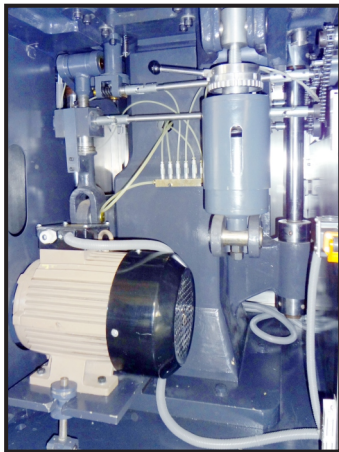
# TECHNICAL SPECIFICATIONS

Model	ECO - IV		
Tablet Press Type	Double Rotary		
Number of Stations	27	35	45
Tooling	EU-D	EU-B	EU BB
Tablet Output (Tab/hr) (Max.)*	149,000	193,000	248,000
Turret Speed	10 - 46 RPM		
Tablet Diameter (Max.)	25 mm	16 mm	13 mm
Filling Cam Depth	12 / 16 / 18 mm	8 / 12 / 17 mm	8 / 12 / 17 mm
Tablet Thickness (Max.)	8 mm		
Filling Depth (Max.)	20 mm	17 mm	
Variable Upper Punch Insert	1.5 / 3.5 / 4.75 / 6.0 / 8.0 mm		
Main Pressure (Max.)	100 kN (10 Ton)	60 kN (6 Ton)	
Power - Main Motor	10 HP 1440 RPM, 415 V, 3 PH, 50 Hz		
Feeder	Gravity Feeder (Standard) Double Paddle Force Feeder (Optional)		
Machine Footprint – Main Machine	1100 x 1024 mm		
Machine Height (without Hopper)	1650 mm		
Machine Height (with Hopper)	1800 mm		
Net Weight	1600 kg		
Gross Weight	2000 kg		



TOP VIEW

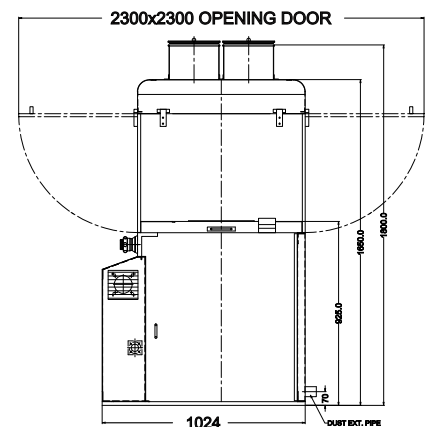
\* Machine output mentioned are rated outputs and can vary depending on the product characteristics, Tablet dimensions / shape / size, depth of fill, ambient conditions, operator skill and machine maintenance.



Lower Compression Zone



Force Feeder Zone (Optional)



SIDE VIEW



## SERVICE SUPPORT

- ▶ Ahmedabad
- ▶ Chennai
- ▶ Hyderabad
- ▶ Bengaluru
- ▶ Delhi
- ▶ Indore
- ▶ Chandigarh
- ▶ Goa
- ▶ Sikkim



## Parle Elizabeth Tools Pvt. Ltd.

329/P, Behind J.K Weigh Bridge, Opp. Harsha Engineering,  
Changodar, Ahmedabad - 382213 Tel: +91 7600017570  
info@parle-elizabeth.com www.parle-elizabeth.com

## BRANCH OFFICE

- ▶ Ahmedabad
- ▶ Delhi
- ▶ Pinjore
- ▶ Bengaluru
- ▶ Goa
- ▶ Hyderabad
- ▶ Chennai