

EP-400 AWC is ideally suited for :  
Medium Range production in  
Pharma, Neutraceutical, Confectionary



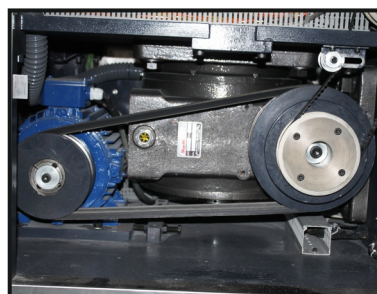
## Auto Weight Control (AWC) System:

- » EP 400 AWC is offered in variants of 27 D tooling/29 D tooling / 35 B tooling or 45BB tooling.
- » The machine is built sturdy for heavy duty application.
- » Direct drive to the turret through a High torque reduction gear box & ACVFD
- » Independent ACVFD for each force feeder (Station 1 & Station 2)
- » Separate electrical panel & operating panel
- » HMI Panel PC for operating the mk.
- » 21CFR part 11 compliance.
- » Automatic weight control with servo motors
- » Pre thickness and Main thickness control motorized through the control panel

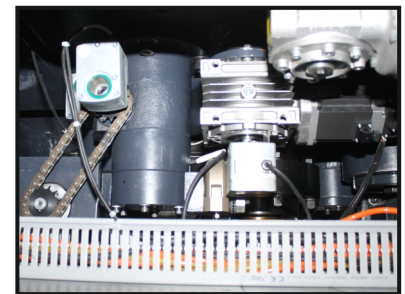
- » Optional integration of DWHT
- » Defective tablet identification by force measurement
- » Independent layer weight control in Bi layer by force measurement
- » Auto sampling of 1st layer tablet in bi layer mode
- » Complete recipe management, data acquisition and control with Audit trail
- » 4 level of PASSWORD control for different user level with different rights.
- » "TOOL SAFE" Overload System
- » Choice of only AFR Model available where, defective tablets by weight is rejected without AWC Function.



Force Feeder



Turret Drive Gear Box

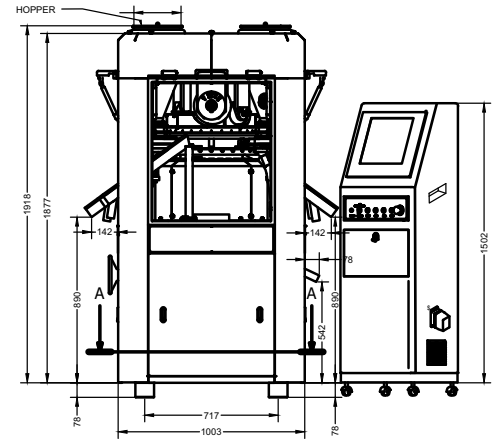


Lower Compression Zone

# TECHNICAL SPECIFICATIONS

Model	EP 400 (Auto Weight Control System)		
Type	Double Rotary Tablet Press		
Number of Stations	29	37	45
Tooling	EU-D	EU-B	EU-BB
Tablet Output (Tab/hr) (Max.)*	174,000	222,000	270,000
Turret Speed	10 - 50 RPM		
Max. Tablet Diameter	25 mm	16 mm	13 mm
Max. Tablet Thickness	8 mm		
Filling cam depth	12/16/20 mm	8/12/17 mm	8/12/17 mm
Variable Upper Punch Insert	2 mm 8 mm		
Main Pressure (Max.)	100 kN	60 kN	60 kN
Pre Pressure (Max.)	20 kN	20 kN	20 kN
Power - Main Motor	10 HP, 1440 RPM, 415 V, 3 PH, 50 Hz		
Main Motor Inverter	10 HP (7.75 kw)		
Force Feeder	Double Paddle Force Feeder		
Machine Footprint Main Machine	1280 mm x 1320 mm		
Machine Height (without Hopper)	1877 mm		
Machine Height (with Hopper)	1918mm		
Net Weight	4700 kg		

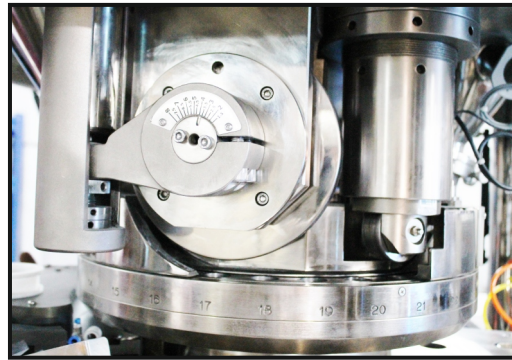
\* Machine output mentioned are rated outputs and can vary depending on the product characteristics, Tablet dimensions / shape / size, depth of fill, ambient conditions, operator skill and machine maintenance.



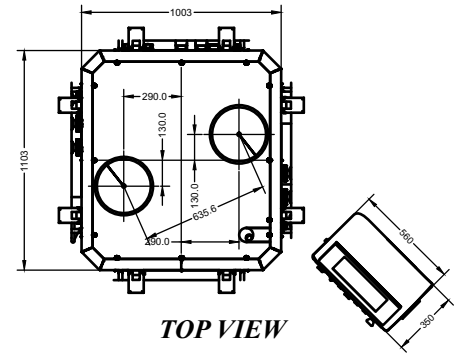
FRONT VIEW



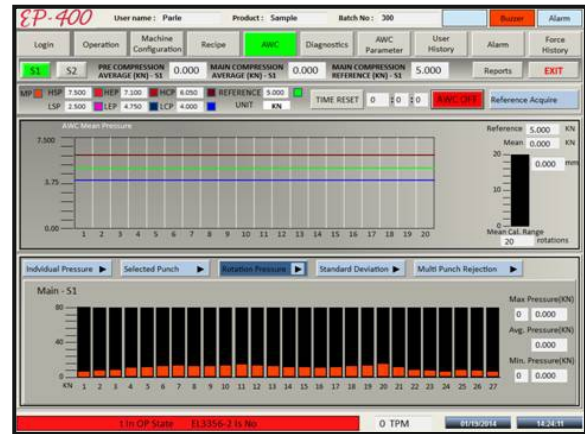
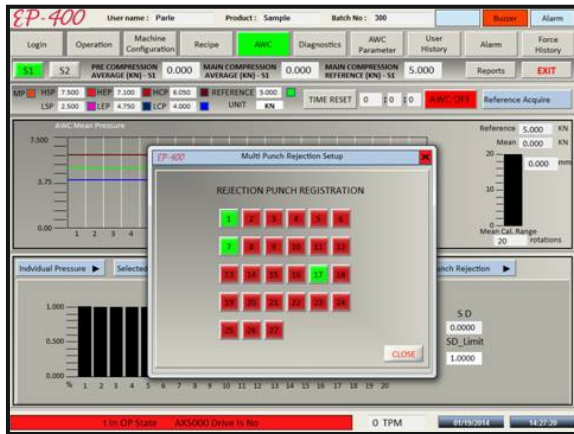
Compression Zone



Pre Compression & Main Compression



TOP VIEW



## SERVICE SUPPORT

- ▶ Ahmedabad
- ▶ Bengaluru
- ▶ Chandigarh
- ▶ Chennai
- ▶ Delhi
- ▶ Goa
- ▶ Hyderabad
- ▶ Indore
- ▶ Sikkim



## Parle Elizabeth Tools Pvt. Ltd.

329/P, Behind J.K Weigh Bridge, Opp. Harsha Engineering, Changodar, Ahmedabad, - 382213 Tel: +91 7600017570 info@parle-elizabeth.com www.parle-elizabeth.com

## BRANCH OFFICE

- ▶ Ahmedabad
- ▶ Bengaluru
- ▶ Chennai
- ▶ Delhi
- ▶ Goa
- ▶ Hyderabad
- ▶ Pinjore