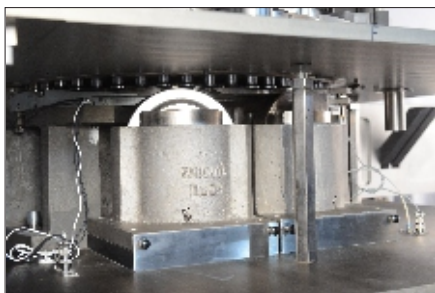
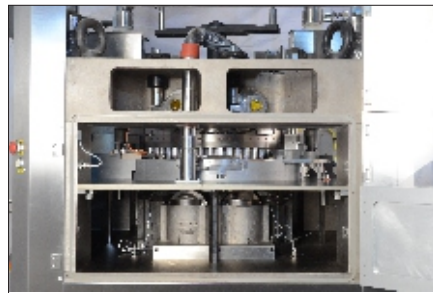


- » Direct drive to the turret through a heavy duty torque gear box
- » Auto weight control function by force measurement
- » Servo driven control for Weight, pre thickness and main thickness
- » Pre and Main compression of same force
- » Force feeder with Aluminium Hard Anodized and Independent ACVFD
- » Ejection and take off force measurement
- » Auto identification of Fill track
- » 21 CFR part 11 compliance in full
- » High speed processor for data acquisition and analysis
- » Electro magnetic clutch in drive and hand wheel side for quick start & stop and easy hand rotation during change over
- » Minimal dust generation during compression



Lower Compression Zone



Zone Separation

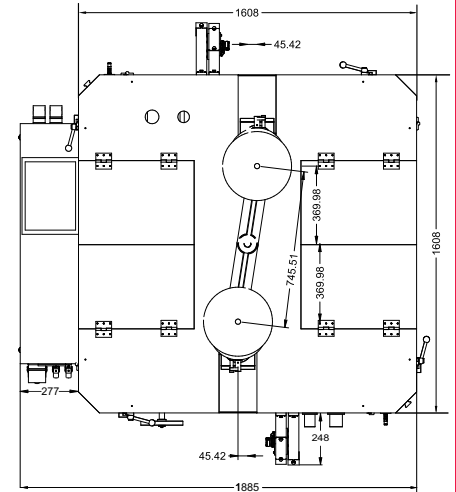


Production Zone

TECHNICAL SPECIFICATIONS

Model	EP 700 AWC		
Tablet Press Type	Double Rotary Tablet Press		
Number of Stations	51	61	75
Tooling	D	B	BB
Tablet Output (Tab/hr) (Max.)*	Single layer - 489,600 Bi layer - 122,400	Single layer - 585,600 Bi layer - 146,400	Single layer - 720,000 Bi layer - 180,000
Turret Speed	10 - 80 RPM		
Max. Tablet Diameter	20 mm	17 mm	17 mm
Filling cam depth	12/16/18 mm	8/12/17 mm	8/12/17 mm
Max. Tablet Thickness	8 mm		
Variable Upper Punch Insert	up to 8 mm		
Main Pressure (Max.)	100 kN	60 kN	60 kN
Pre Pressure (Max.)	100 kN	60 kN	
Main Motor	10 HP	10 HP	10 HP
Machine Footprint-Main Machine	1885 mm x 1608 mm		
Machine Height (with Hopper)	2453 mm		
Net Weight	8000 kg		

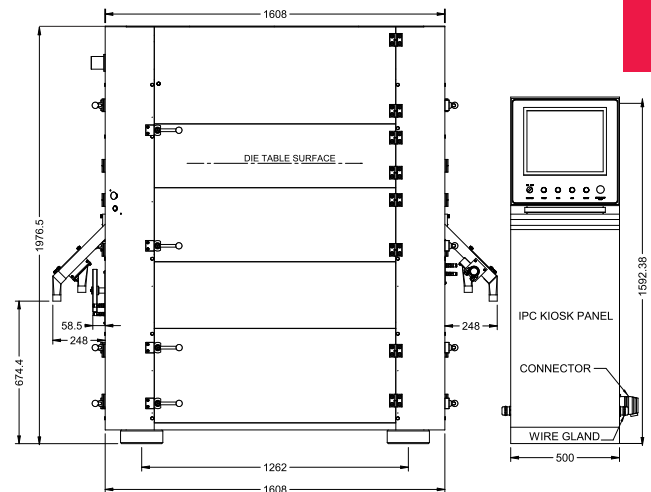
* Machine output mentioned are rated outputs and can vary depending on the product characteristics, Tablet dimensions/ Shape/ Size, depth of fill, ambient conditions, operator skill and machine maintenance conditions.



Top View

Automatic Weight Control system (AWC)

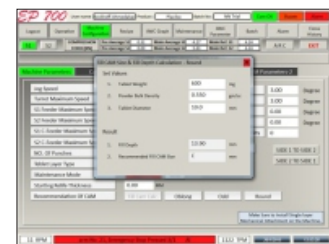
- » Automatic weight control function is based on the measurement of compression force at the time of tableting.
- » The machine is set up for the desired tablet parameters such as Tablet weight, thickness and hardness.
- » Once the desired tablet parameters are achieved, then the average compression force for the desired tablet parameter is taken as the target force.
- » The high and low reject limit of the compression force is set for rejection in terms of percentage of target force or absolute values.
- » The correction parameter force limit is set within which the weight control function is performed.
- » These are Automatic weight control parameters to produce the tablet within the press settings and reject tablets which are outside the band of reject limits.
- » The machine is started and the desired running speed value is entered. The proprietary program increases the speed by 1 rpm keeping the weight within the correction parameter limit set.
- » This function ensure, the rejects are not produced and yield is higher due to less set up losses.



Front View



Operations Screen



Machine Configuration



SERVICE SUPPORT

- ▶ Ahmedabad
- ▶ Chennai
- ▶ Hyderabad
- ▶ Bengaluru
- ▶ Delhi
- ▶ Indore
- ▶ Chandigarh
- ▶ Goa
- ▶ Sikkim



Parle Elizabeth Tools Pvt. Ltd.

329/P, Behind J.K Weigh Bridge, Opp. Harsha Engineering,
Changodar, Ahmedabad - 382213 Tel: +91 7600017570
info@parle-elizabeth.com www.parle-elizabeth.com

BRANCH OFFICE

- ▶ Ahmedabad
- ▶ Delhi
- ▶ Pinjore
- ▶ Bengaluru
- ▶ Goa
- ▶ Chennai
- ▶ Hyderabad