

# JS-400

---

## Metal Detector



# JS-400

## Industrial Metal Detector



# JS-400

# CE

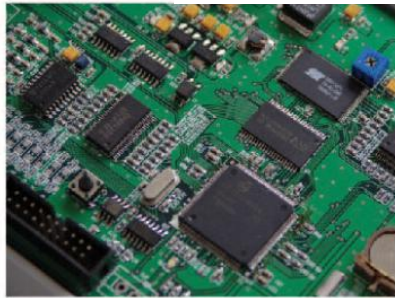
**Purpose:**

Food industrial, Chemical industrial, Pharmaceutical industrial, Garments industrial

**Features:**

- Based on High speed 32bit CPU control circuit.
- LCD with Touch Screen, easy to operation.
- Multi-Functional OS and dual-language.
- DSP Technology and digital signal filter.
- 100 products memory.
- 1000 detection logs.
- Multipal setup for peripheral connection.
- Frequency optional.
- Printer connection and signal analyze software.
- Separated DSP module and control unit.
- Automatical rejection module.
- Match different productline.

## Technical Data



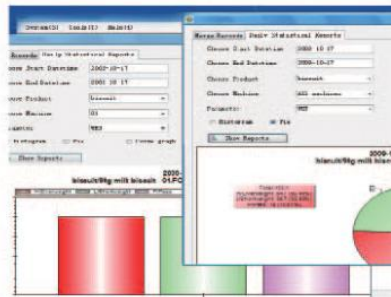
High speed CPU control circuit



LCD with Touch Screen



Automatical rejection module



Info deck V1.1

Technical Data	JS-400
<b>Theory</b>	Balanced Coil
<b>Aperture Size</b>	400×250mm
<b>Belt Speed</b>	10-30m/min(Adjustment)
<b>Reject system</b>	Arm Pusher/Swing Arm(Optional)
<b>Alarm</b>	Buzzer&Lamp
<b>Power</b>	110/220V 50/60Hz
<b>Rated Output</b>	90W
<b>Dimension</b>	1500×980×750±50mm(H)
<b>Weight</b>	220Kg

Aperture Size	Sensitivity	Product Limit(mm)
400mm×120mm	FeØ0.8mm SUSØ1.5MM	customized×350×70
400mm×150mm	FeØ1.0mm SUSØ2.0MM	customized×350×100
400mm×200mm	FeØ1.2mm SUSØ2.5MM	customized×350×150
400mm×250mm	FeØ1.5mm SUSØ3.0MM	customized×350×200

### **SaintyCo also offer:**

- Softgel Manufacturing Line
- Automatic Gummy Product Line(Pilot to Large Scale)
- Gummy Pouch Packing Solution
- Gummy Bottle Packing Solution
- Check Weigher

For additional information, please drop email to [info@saintyco.com](mailto:info@saintyco.com).

