

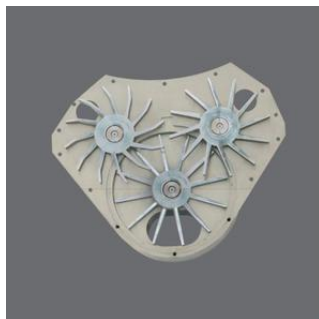
MAGAN*Press*-Tablet Press



MAGNAPress-Tablet Press

The MAGNAPress Tablet Press is a reliable, versatile, double sided, high speed tableting machine. **SaintyCo** has optimised the press to achieve maximum performance with minimum wear.





Three slurry impeller force feeding system.



Adopt sevice motor control feeding system and adjust feeder separately through control servo motor, feedback and adjust promptly and locate accurately.



Adopt non-handwheel operation system.

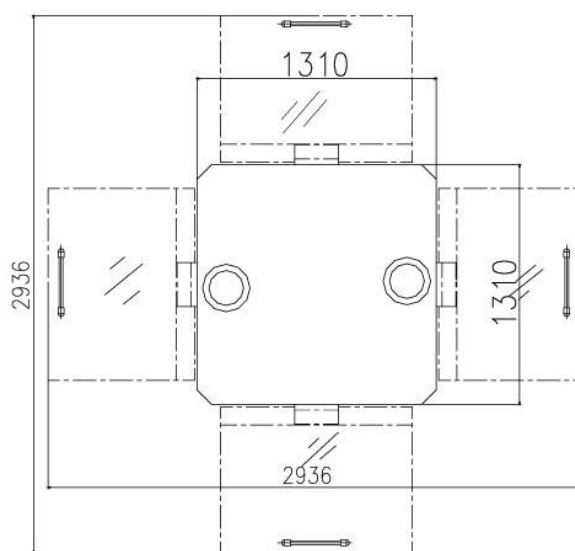
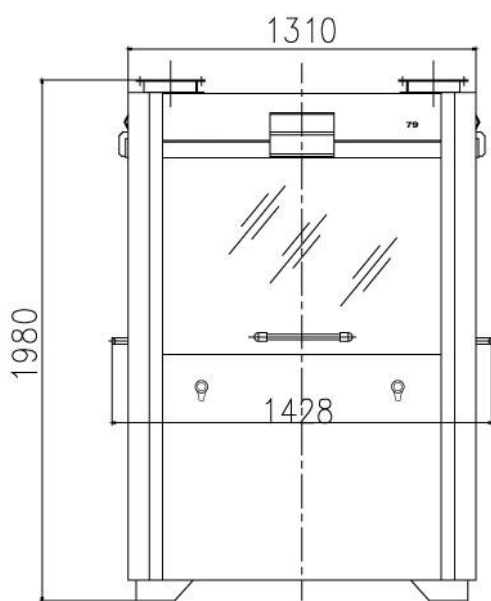


Industry design, adopt advanced PCC control system.

Features:

- Siemens PLC&HMI
- Contact parts 316L
- High speed: up to 680,000 tabs/h
- Excellent performance with challenging high volume products such as Metformin and Amlodipin
- Quick product and format changes: tablet chute and fill shoe can be swung out – no tedious readjustments
- Few product contact parts: minimal cleaning effort
- Tool-less format change
- Optimal hygienic design
- Hermetical separation between compaction and service area
- Patented, closed punch bellows to prevent tablet contamination

Dimensions:



| MagnaPress Technical Data | 49 | 61 | 73 | 79 |
|--------------------------------|---------------------|--------|--------|--------|
| Machine configurations | Mono-layer,Bi-layer | | | |
| Punch&die type(EU) | D | B | BB | BBS |
| Number of press station | 49 | 61 | 73 | 79 |
| Max tablet diameter(mm) | 25 | 16 | 13 | 11 |
| Max abnormal prolate axis size | 25 | 18 | 16 | 13 |
| Max output(Tablet/h) | 430000 | 530000 | 630000 | 680000 |
| Max filling depth(mm) | 20 | 18 | 18 | 18 |
| Max main pressure(KN) | 100 | 100 | 100 | 100 |
| Max pre pressure(KN) | 100 | 100 | 100 | 100 |
| Idle load noise dB(A) | <75 | | | |
| Power | 380V 50HZ 13.5-15KW | | | |
| Dimension (mm) | 1310*1310*1980 | | | |
| Weight (KG) | 4600 | | | |

SaintyCo also offer:

Encapsulation Solutions

Tablet Compression Solutions

Coating Systems

Cartoning Systems

Blister Packing Solutions

