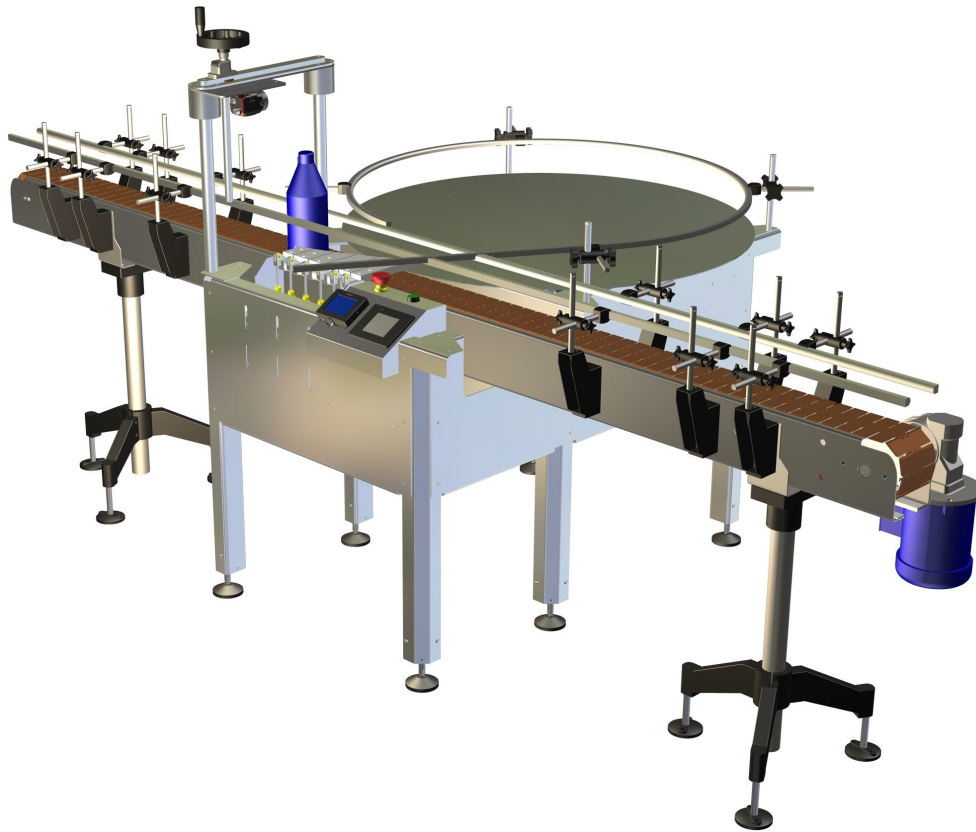




Model 1900-002 Bottle Reject



Automatic Inline Bottle Reject- Model 1900-002 has the corresponding multi-segment rejector in its range for the most different container sizes, shapes and materials as well as for the most varied applications.

Construction Features:

- 304 Stainless steel heavy duty stainless steel frame.
- All shafts and threaded rods manufactured in 304 stainless steel.
- Calibrated guide for fast height settings.

Control panel features:

- Omron PLC for all machine logic functions, special modifications on programs available for special adaptations.
- 5 in Omron HMI for all machine functions and delays.
- Frequency control drive conveyor speed, acceleration and deceleration.
- Front panel Start and Emergency STOP for easy access.
- Rejection of glass and PET containers.
- Pneumatically controlled pusher elements.
- Rejection onto an accumulating rotary table.

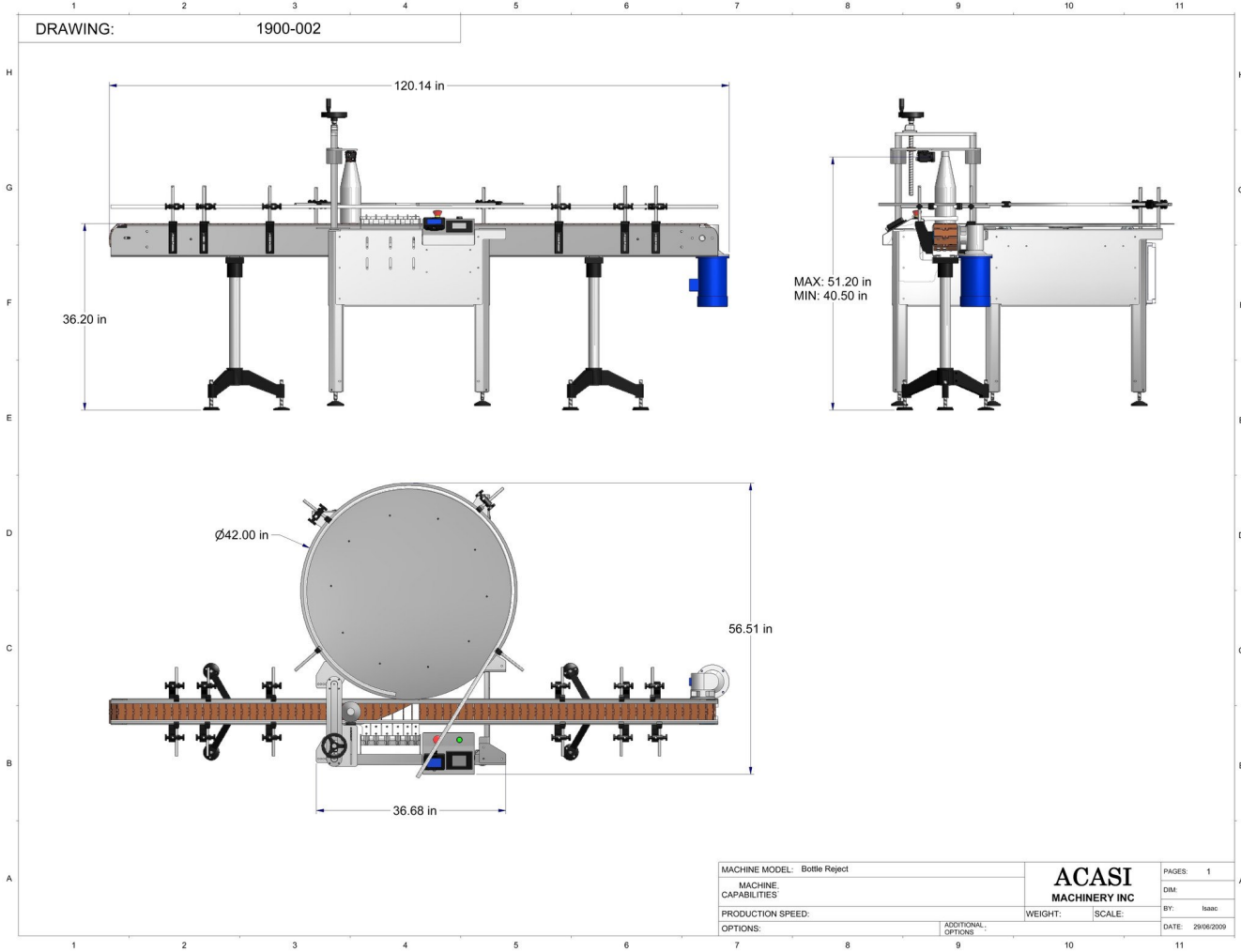
Standard features:

- Container height adjustment from 7.5 to 18 inches high.
- Will work with plastic or glass containers.
- No change parts needed for various types of containers.
- The bottle reject can also be easily integrated into existing lines.
- The bottle reject safely rejects fallen-over, empty, partially filled and full containers.

Rotary table Features:

- 42-inch diameter table manufactured in 1/8" width 304 stainless steel.
- Support of stainless steel disc by 1/2 inch aluminum plate.
- Main structure manufactured in 1/8" width 304 stainless steel.
- Includes stainless steel covers on 4 sides.
- Powered by 3-phase AC motor.
- Speed control by VFD.
- Variable speed up to 150 containers per minute.

DRAWING: 1900-002



MACHINE MODEL:	Bottle Reject	ACASI MACHINERY INC	PAGES:	1
MACHINE CAPABILITIES:			DWG:	
PRODUCTION SPEED:		WEIGHT:	SCALE:	BY: Isaac
OPTIONS:		ADDITIONAL OPTIONS:		DATE: 28/06/2009