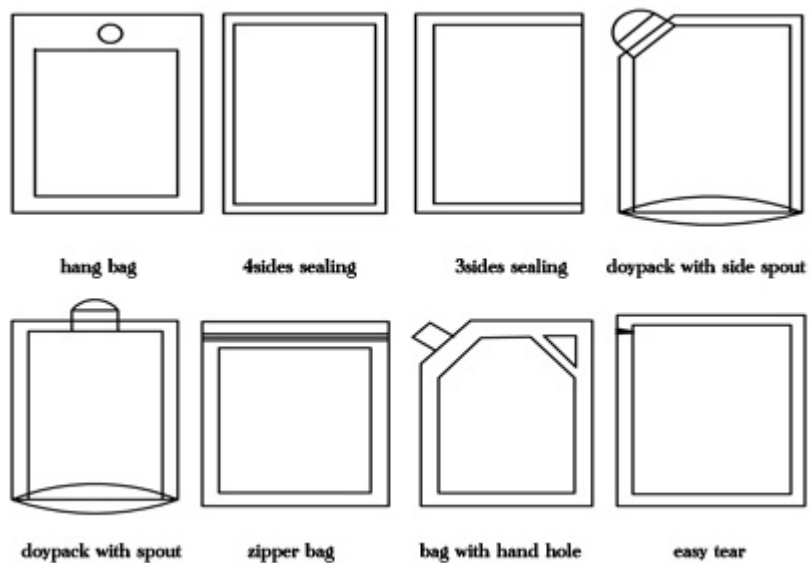




## ZG8-200 Pre-made Pouch Packing Machine



ZG8-200 eight -working Station Bag-given Packaging Machine is mainly used packaging of solid, granule, powder, liquid, thick liquid and other materials can be bagging, it can make various of bags, the packing range is 5-1500g, the maximum speed can reach 45bags/min.



### Introduction

ZG8-200 Pre-made Pouch Packing Machine is the typical automatic bag feeding packing machine; it can finish the following work: clasp the bag, print the bag, open the bag, filling, vibrating, sealing, shaping, conveying etc. It is suitable for many kinds of materials and different

packaging bag. It is easy to adjust and operate and to change the packing specification. The machine is equipped with automatic checking and safety monitoring function. It can lower the consumption rate of wrapping material and keep the sealing effect and bag shape. The whole machine is made of 316 Stainless Steel which is hygienic and safety.

**Function and characteristics:**

1. Easy to operate, adopt advanced PLC from Germany Siemens, mate with touch screen and electric control system, the man-machine interface is friendly.
2. Frequency conversion adjusts the speed: this machine uses frequency conversion equipment, can be adjusted within the range according to the needs of reality in production
3. Automatic checking: no pouch or pouch open error, no fill, no seal. the bag can be used again, avoid wasting packing materials and raw materials.
4. Safety device: Machine stop at abnormal air pressure, heater disconnection alarm.
5. The width of the bags could be adjusted by electrical motor. Press the control-button could adjust the width of clips, easily operate, and save time.
6. It matches with the glass safety door. The machine will stop working when you open the door. So that it could protect the safety of operators. At the same time, it could prevent dust.
7. Use the plastic bearing, don't need put on oil, less pollution.
8. Use no oil vacuum pump, avoid polluting the environment in the production.
9. The packing materials loss low, what this machine is used the preformed bag, the bag pattern is perfect and has a high quality of the sealing part, this improved the product specification
10. Product or packing bag contact parts adopt stainless steel or other materials which accord with the food hygienic requirements, guarantee hygiene and security of the food
11. With different feeders changed to pack solid, liquid, thick liquid, powder and so on
12. The packing bag suits in extensive range, suit for multi-layer compound, monolayer PE, PP and so on Preformed bag made by film and paper.

**Technical parameters:**

Model	ZG8-200A	ZG8-200A-S
Control motor	Inverter motor	Servo motor
Bag Type	Premade bag	
Operation Mode	Intermittent	
Working position	eight-working position	
Pouch material	Laminated film\PP\PE etc.	
Speed	Up to 45 bags/min	
Bag Length	100-300 mm	
Bag Width	100-200 mm	
Film Thickness	0.04-0.12 mm	
Voltage	AC 220V/ 50HZ 1phase or per customer needs	
Power Consumption	5.5KW	
Compressed Air Requirement	0.6MPa, 0.36 M3 / Min	
Dimension	1650X1450X1480mm	
Weight	1000KG	

