



OCTAGONAL BLENDER

The Octagonal Blender with its octagonal shaped mixing bin and built-in baffles ensures efficient blending.

SALIENT FEATURES

- ⇒ Octagonal blender is supplied with a bin charging system or can be designed for vacuum charging.
- ⇒ Ideal for gentle blending of dry granules or powder.
- ⇒ Removable baffle mounted through a rectangular openable lid.
- ⇒ Bin charging system can be incorporated with dust free closed system for charging and discharging.

Models available (in Liter): 5 to 6,000



DOUBLE CONE BLENDER

The Double Cone Blender with its Double cone shaped bin ensures efficient blending suitable for specified user's requirement.

SALIENT FEATURES

- ⇒ Conical shape at both ends enables uniform mixing and easy discharge.
- ⇒ Cone statically balanced to avoid any excessive load on the gearbox and motor.
- ⇒ Discharge through a Mucon valve or butterfly valve.
- ⇒ Paddle type baffles can be provided on the shaft for better mixing.
- ⇒ Flame-proof motor can be supplied as an option.

Models available (In Liter): 5 to 2,500



DRUM BLENDER

The Drum Blender with its tumbling action ensures efficient blending and its removable drum design makes transfer of material easy.

SALIENT FEATURES

- ⇒ Loading of the material easier as the lid is easily removable.
- ⇒ Conical baffles fitted on lid ensures uniform mixing of material.
- ⇒ The Conical bottom enables easy flow while unloading

Models available (in Liter): 100 to 600



Granulation Equipment

QUALITY THAT EXCELS IN GLOBAL MARKETS

MACHINES CAN BE SUPPLIED FOR 380 VOLTS 3PHASE 50 Hz OR 220 VOLTS 3PHASE 60 Hz AS PER CLIENT'S REQUIREMENTS

Anchor Mark Private Limited offers comprehensive technical consultancy and advisory assistance if required. Necessary personnel training and assistance are provided as after-sales support.

As the design and manufacture of ANCHOR MARK PRIVATE LIMITED machines are subject to continual improvement, the product supplied may differ in some details from the specifications and illustrations given herein.



RAPIDMIX

HIGH SHEAR MIXER GRANULATOR

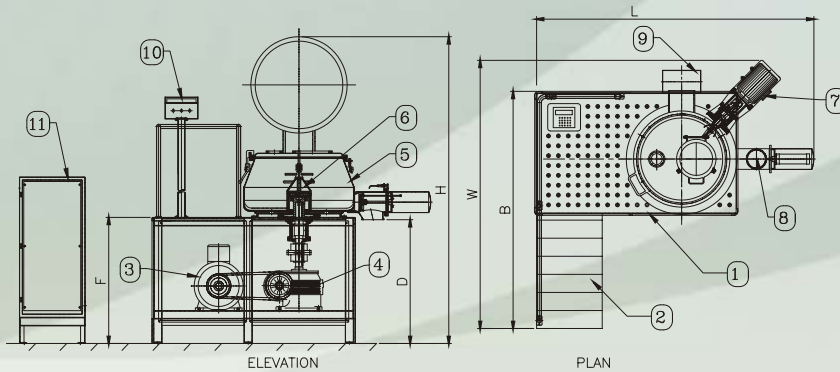
RAPIDMIX - High Shear Mixer Granulator developed for mixing of ingredients as well as wet granulation. The multi-bladed dual speed impeller is fitted close to the base of the mixing bowl whereas the chopper is mounted on the wall of the mixing bowl. Both the impeller & chopper have dual-speed options for gently distributing the binder solution as it is added and creating the vortex of the material being mixed.

SALIENT FEATURES

- ⇨ Design and finish comply with cGMP standards.
- ⇨ Telescopic lifting arrangement for main impeller as an option.
- ⇨ CIP Manifold (spray ball arrangement) for washing product contact surfaces.

- ⇨ Specially designed impeller blades to optimize high speed agitation.
- ⇨ Precision engineering to minimize clearance between bowl and impeller.
- ⇨ Machine is supplied with standard manual controls.
- ⇨ Programmable Logic Control with HMI for the visual display of the operating parameters available as option.

- ⇨ Variable Frequency Drive for Impeller & Chopper available as option.
- ⇨ Specially designed air-purged cGMP shaft seals.
- ⇨ Jacketed Bowl Provision - available as option.
- ⇨ Flame-proof construction - available as option.



- | | |
|---------------------------------|----------------------------------|
| 1 BASE STAND | 7 CHOPPER ASSEMBLY |
| 2 STAIRCASE WITH SAFETY RAILING | 8 DISCHARGE PORT |
| 3 IMPELLER DRIVE MOTOR | 9 COUNTER-WEIGHT FOR LID LIFTING |
| 4 IMPELLER DRIVE GEARBOX | 10 OPERATING PANEL |
| 5 BOWL | 11 CONTROL PANEL |
| 6 IMPELLER | |

TECHNICAL SPECIFICATIONS

Model	RMG 25	RMG 50	RMG 100	RMG 150	RMG 250	RMG 400	RMG 600	RMG 700	RMG 1200
Gross Capacity -Ltrs.	25	50	100	150	250	400	600	700	1200
Working Capacity -Ltrs.	20	40	80	120	200	320	480	560	960
Impeller Motor -HP	3 / 5	5 / 7.5	7.5 / 10	10 / 15	25 / 30	30 / 40	40 / 50	40 / 50	80 / 100
Chopper Motor -HP	1.5 / 2	1.5 / 2	2 / 3	2 / 3	3 / 5	5 / 7.5	5 / 7.5	5 / 7.5	10 / 15
Dimensions (All dimensions are in mm)									
L (Length)	1700	1850	1925	2400	2650	2850	3000	3100	3950
W (Width)	1050	1100	1150	2350	2550	3000	3200	3300	4250
H (Height)	1600	2000	2200	2400	2800	3100	3350	3500	4200
B (Body Ladder Width)	NA	NA	NA	1975	2250	2500	2700	2800	3850
F (Platform Height)	750	850	900	975	1100	1200	1300	1350	1770
D (Discharge Height)	650	825	900	950	1100	1150	1275	1370	1770
Net Weight - Approx (in kg)	200	300	500	750	1200	2100	3000	3500	6500

N.B.: The dimensions are subject to change depending upon continual modifications in design for better performance of the equipment.



VIBROSIFTER

The Vibrosifter with its Vibro-motor mounted vertically at the center of hopper is ideal for gentle separation of dry powders / granules by utilizing different sizes of screen.

SALIENT FEATURES

- ⇨ Contact parts made of SS 316 / SS 316L.
- ⇨ Interchangeable Screens.
- ⇨ Portable, compact and easy to handle and dismantle for cleaning.
- ⇨ Flame-proof motor can be supplied as an option.

Models available - 12", 20", 30", 36" and 48"



MECHANICAL SIFTER

The Mechanical Sifter is used for sifting, grading and screening of powders / granules based on the gyratory principle of eccentric weights using dynamic balancing.

SALIENT FEATURES

- ⇨ Contact parts made of SS 316 / SS 316L.
- ⇨ Interchangeable Screens.
- ⇨ Portable, compact and easy to handle and dismantle for cleaning.
- ⇨ Flame-proof motor supplied as an option.
- ⇨ Drive unit located in the center to get the same screening efficiency over entire surface.

Models available - 12", 20", 30"

MULTIMILL

The Multimill is used for granulating, pulverising, shredding and chopping of materials. Odd-size crystalline material/ granules can be reduced to the required size by fitting interchangeable perforated screens around the swinging hammer blades.

SALIENT FEATURES

- ⇨ Contact parts made of SS316 / SS 316L.
- ⇨ Compact, easy to operate and dismantle for cleaning.
- ⇨ Variable frequency drive for speed variation as an option.
- ⇨ Height of discharge can be made to suit different capacity IPC height.

Models available - 20 kg / hr. (Lab Model), 50 kg to 200 kg / hr.



COATING PAN

Conventional Coating Pans are used for coating of tablets and drying them simultaneously by hot air from blower.

SALIENT FEATURES

- ⇨ Machine equipped with hot blower for feeding hot air at a temperature range of 40°C to 80°C. Thermostat provided for easy selection of required temperature.
- ⇨ Damper provided for inlet air control.
- ⇨ Flame-proof motor can be supplied as an option.
- ⇨ Variable frequency drive for speed variation as an option.

Models available - 12", 24", 36", 42", 48" and 60"



Turbosifter Cum Multimill

The Turbosifter cum Multimill is used for high speed sieving and milling simultaneously to achieve uniform particles.

SALIENT FEATURES

- ⇒ High speed sieving with quick changeover of sieves.
- ⇒ Dust free discharge and charging
- ⇒ Flame-proof construction as an option.



Conta Blender

The Conta Blender conforms to cGMP norms and gives better mixing efficiency as compared to conventional blenders. The rotation of bunker in a diagonally eccentric plane ensures efficient blending.

SALIENT FEATURES

- ⇒ Fluid coupling between motors and gear box to take care of initial torque.
- ⇒ Electric and Manual inching arrangement to bring the bunker back to rest at initial position.
- ⇒ Ideal for dry blending and lubrication of granules / powder.
- ⇒ Programmable Logic Control (PLC) system & HMI for visual display as an option.
- ⇒ Tumbling principle in partial void enables homogenous mixing of active ingredients, additives and raw materials.
- ⇒ Variable Frequency Drive for speed control as an option.



TECHNICAL SPECIFICATIONS

MODEL	CB-50	CB-75	CB-100	CB-150	CB-350	CB-450	CB-600	CB-1200	CB-1500
Capacity (in Ltrs.)	50	75	100	150	350	450	600	1200	1500
Drive Motor (in HP)	1	1	2	3	5	5	7.5	20	20
Power Pack Motor (in HP)	NA	NA	1.5	1.5	1.5	1.5	1.5	2	2
Dimensions (m mm)-Approx.									
Length	2000	2000	2200	2334	3150	3460	3100	3400	3464
Width	800	800	875	1130	1200	1354	1750	2100	2300
Height (Bin in lifted position)	1100	1100	1175	1400	1600	1700	2200	2500	2410
Net Weight - Approx. (in kg.)	300	350	550	600	650	700	1250	2250	3500

N. B. : The dimensions are subject to change depending upon continual modifications in design for better performance of the equipment.

FLUIDRY

FLUID BED DRYERS

FLUIDRY Fluid Bed Dryer works on the principle of creating a fluid turbulence in a granulated or powdery wet product by means of hot air (or dehumidified air) flowing in an upward direction and drying the product to the required degree.

SALIENT FEATURES

- ⇒ Short drying time and Low drying temperature.
- ⇒ Uniform drying.
- ⇒ Rapid exchange of granules.
- ⇒ Single piece retarding chamber and finger bag chamber with inflatable gasket.
- ⇒ Electric / steam - air heating systems with SS heat exchangers.
- ⇒ Fully automatic bag shaking arrangement.
- ⇒ Intrinsically safe earthing mechanism.
- ⇒ AHU with Inlet-air filtration system having 20 Micron Coarse Filter, 5 Micron Pre Filter and 0.3 micron HEPA filters (Efficiency 99.9 %) as an option.
- ⇒ Compact design
- ⇒ Contact parts in Stainless Steel 304 quality or 316 quality or 316L quality as per user's requirement.
- ⇒ Differential pressure gauge across micro-vee and filter bag as an option.

⇒ Air Handling Unit:

Consists of Inlet Air Filters (3 Stage) including HEPA and heating coils.

⇒ Retarding Chamber:

Houses the Finger Bag Assembly

⇒ Bag Shaking and Lowering Device:

Pneumatically operated specially designed three stage bag shaking arrangement.

⇒ Gaskets:

Food grade Silicon.

⇒ Exhaust Air Blower:

Centrifugal fan with backward curved impeller in stainless steel/Aluminium/MS painted.

⇒ Explosion Vent with Rupture Disc:

For relief of explosion or any excess pressure



built up, a rupture disc of appropriate material and thickness is provided in the explosion vent.

⇒ Sampling Device:

To carry out periodical sampling & analysis of material.

⇒ Dampers:

With PLC Interface.

⇒ Earth Safety Relay:

A safety earth circuit relay is provided to discharge static charge.

⇒ Clean In Place (CIP) System:

Can be provided as an Option.

AIR DUCTS (USER'S SCOPE)

The ducts are fabricated from Stainless Steel material.

Fluid Bed Dryers can also be supplied with solid flow monitor for detecting product leakage from filter bag.

FLUID BED PROCESSORS WITH TOP AND BOTTOM SPRAY ARRANGEMENT IN VARIOUS CAPACITIES ARE ALSO MANUFACTURED.

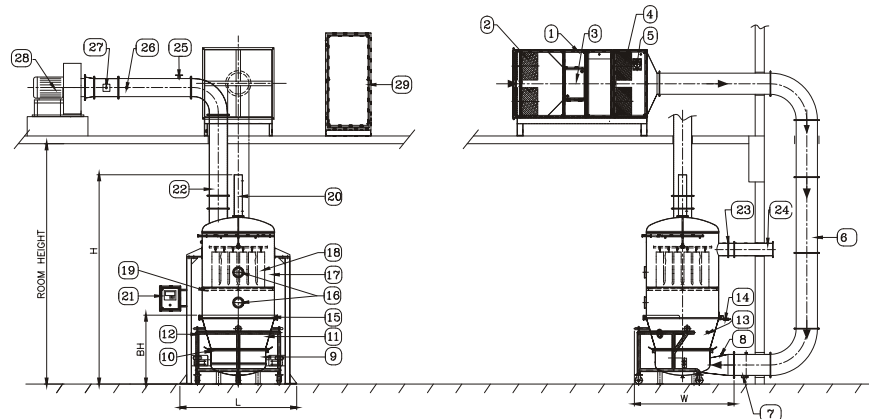
TECHNICAL SPECIFICATIONS

Model	FBD30	FBD60	FBD 120	FBD 150	FBD 200	FBD 250	FBD 300
Gross Capacity - Liter	100	195	425	510	625	800	1000
Working Capacity - Liter	70	140	300	355	440	560	700
Capacity of Dryer - Kg.	30	60	120	150	200	250	300
Blower Motor - HP (Std. Model)	5.0	10	15	20	25	25	30
Blower Motor - HP (in case of 20, 5 & 0.3 micron Air Filters)	7.5	15	20	25	30	30	40
Steam Consumption at 3 - 4 Kg/cm ² Pressure	75 -85	150 -160	200 -215	225 -240	250 -265	275 -300	300 -325
Electrical Heater Capacity - KW	18	36	54	60	N.A.	N.A.	N.A.
Dimensions (All Dimensions are in mm)							
L (Length)	1360	2000	2250	2250	2260	2260	2600
W (Width)	1100	1600	1770	1770	2000	2000	2450
H (Height) upto telescopic cylinder	2500	2920	3460	3560	3950	4100	4500
BH (Product Container Height)	800	910	1140	1240	1250	1400	1420
Net Weight - Approx (base machine only - in kg.)	400	650	900	950	1650	1750	2140

N. B. : The dimensions are subject to change depending upon continual modifications in design for better performance of the equipment.

ELEVATION

SIDE VIEW



- | | | |
|-------------------------------|-----------------------------------|-------------------------------|
| 1 INLET AIR HANDLING UNIT | 11 PRODUCT BOWL | 21 OPERATING PANEL |
| 2 PRE-FILTER (20 & 5 MICRON) | 12 TROLLEY | 22 EXHAUST DUCT |
| 3 STEAM COIL | 13 PRODUCT TEMPERATURE SENSOR | 23 RUPTURE DISC |
| 4 HEPA FILTER (0.3 MICRON) | 14 EARTHING SENSOR | 24 EXPLOSION DUCT |
| 5 DIFFERENTIAL PRESSURE GAUGE | 15 TOP INFLATABLE TUBE | 25 SOLID FLOW MONITOR |
| 6 INLET DUCT | 16 SIGHT GLASS | 26 EXHAUST TEMPERATURE SENSOR |
| 7 INLET DAMPER | 17 RETARDING CHAMBER | 27 EXHAUST DAMPER |
| 8 INLET TEMPERATURE SENSOR | 18 FILTER BAG | 28 CENTRIFUGAL BLOWER |
| 9 HOT AIR INLET CHAMBER | 19 BAG INFLATABLE TUBE | 29 CONTROL PANEL |
| 10 BOTTOM INFLATABLE TUBE | 20 BAG SHAKING PNEUMATIC CYLINDER | |



Starch Paste Kettle

The Starch Paste Kettle conforms to cGMP norms and comprises of a jacketed hemispherical bowl with all necessary steam accessories.

SALIENT FEATURES

- ⇨ Contact parts made of SS 316 / SS 316L.
- ⇨ Bottom discharge with flush bottom ball valve.
- ⇨ Mechanical tilting with worm / wormwheel arrangement. Motorised drive mechanism for tilting as an option.
- ⇨ Detachable Agitator with Anchor blades and Teflon scrappers.
- ⇨ Hydraulic lifting and lowering arrangement as an option.

Models available (in Liter): 25 to 250

Lifter And Tipper Unit

The Lifter and Tipper Unit (LTU) is a standalone unit allowing minimum manpower with cGMP concept for Lifting and Tilting of the FBD bowl.

SALIENT FEATURES

- ⇨ Ideal for faster operation with minimum dust generation.
- ⇨ Tilting head integral with lifting head and housed on the yoke with horse shoe shaped SS lifting cradle.
- ⇨ Tilting degree of the cone provided by double action hydraulic cylinder through specially designed rack and pinion assembly.
- ⇨ Hydraulic Power Pack operated through custom built panel with pushbutton station for Raising / Lowering & Tilting with limit switches for controlling the UP / DOWN movement.

