



HYL-B820

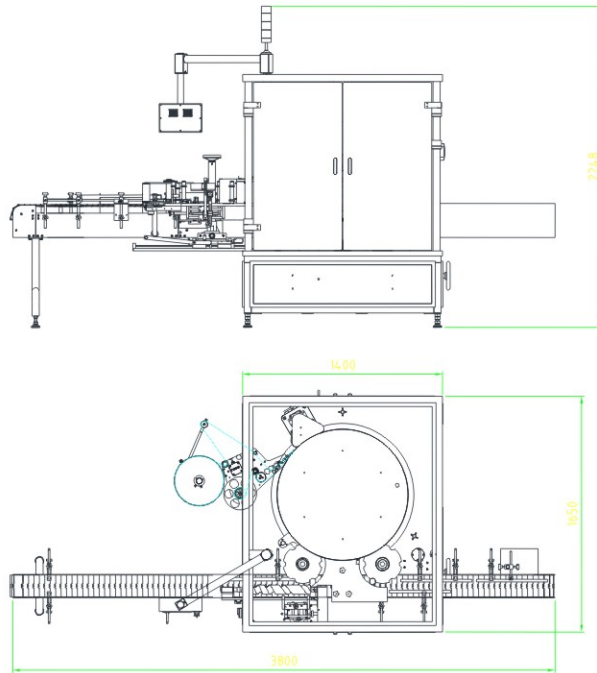
Water Bottle Labeling Machine



Machine Main Parts

	Including	Configuration
1	Servo motor labeling engine	Japan Panasonic Servo Motor Control
2	label unwinder	standard
3	Standard label sensor	Germany SICK label Sensor
4	Standard object sensor	Germany SICK Standard object sensor
5	Top chain conveyor	Germany SEW label engine sensor
6	Bottling star wheel	Germany SEW label engine sensor
7	Bottle-out start wheel	Germany SEW label engine sensor
8	Main Plate	Germany SEW label engine sensor
9	Bottle screw	Germany SEW label engine sensor
10	Bottle grabbing(12-22)	Customized
11	Stainless steel cabinet	Customized
12	PLC Central control system	Siemens from Germany
13	Touch control panel	Weiview

Design Blueprint(For Reference Only)



Technical Parameters

Labeling Speed	100~200pcs/min
Labeling Precision	±1mm
Material Size	Φ80mm
Number of Stations	12
Working Ambient Humidity	15-90% (No condensation)
Overall Dimension	length 3800mm×Width 1700×Height 2200mm (Conveyor length customization)
Power	220VAC±10% 50Hz 4KW

Electrical configuration list

Position	Component name	Quantity	Brand origin
Motor label engine	750w Servo motor labeling engine	1 set	Panasonic
	750w motor labeling engine	1 set	Panasonic
Main plate Motor	Main plate Motor	1 set	SEW
	Frequency converter	1 set	Danfoss
Top chain conveyoyr	Main conveyor drive motor	1 set	Sigma
	Frequency converter	1 set	Danfoss
Sensor section	Standard object sensor	1 set	SCIK
	Standard label sensor	1 set	SCIK
Weak current configuration part	Leakage switch	1 set	Schneider
	Emergency stop switch	2 sets	Schneider
	PLC Programmable Controllers	1 set	Siemens
	Power supply	1 set	Schneider
	touch screen	1 set	TaiWan weiview
	Relay	1 set	Schneider
	Load switch	1 set	Schneider
	Warning alarm light	1 pcs	Schneider

Component illustration



- Feeder top chain conveyor :adopt chain conveyor, can design its width follow customer sample.



- Main plate: adopts 12 station main plate and adopts cam positioning ,which can accurately find the product positioning point and rotate to the labeling position, which can realize high speed positioning labeling and keep the product in the same posture.



- Feed screw and star wheel: Synchronous gear transmission is used to perfectly match the main plate, so that the products can enter the station one-to-one.
- Adjusting the base: The labeling head adjustment adopts linear guide and digital scale display, which makes the manual operation and operation simple and convenient.



The device part adopt the Switzerland steel sand roll, steel sand roller long using life, will not be deformed by the pressure, friction is excellent ,send label mark

- Motor label engine: he fixed roller of the feeder is fixed by three-point positioning method to ensure the concentricity of the gold sand roller when rotating, and the wrap angle of the label and the gold sand roller increases, which makes the label stop accuracy more stable. Swiss technology gold steel sand roller has high friction and does not slip, has no deformation and long service life, and has high precision in servo motor drive.
- Cabinet guard mechanism: The whole machine adds safety shields, which can effectively prevent the safety problems caused by wrong operation during high-speed operation.



Sunflower Technology Co.,Ltd

Add:3rd Floor, No.1 Xiayuan Shichang Road, Huangpu District , Guangzhou,China.
Tel: 0086 20-8202 2007 Fax: 0086 20-8206 1056
Email: info@sunflowerpack.com Web:www.sunflowerpack.com

