

# ACQ Series of Horizontal Ampoule Ultrasonic Bottle Washing Machine

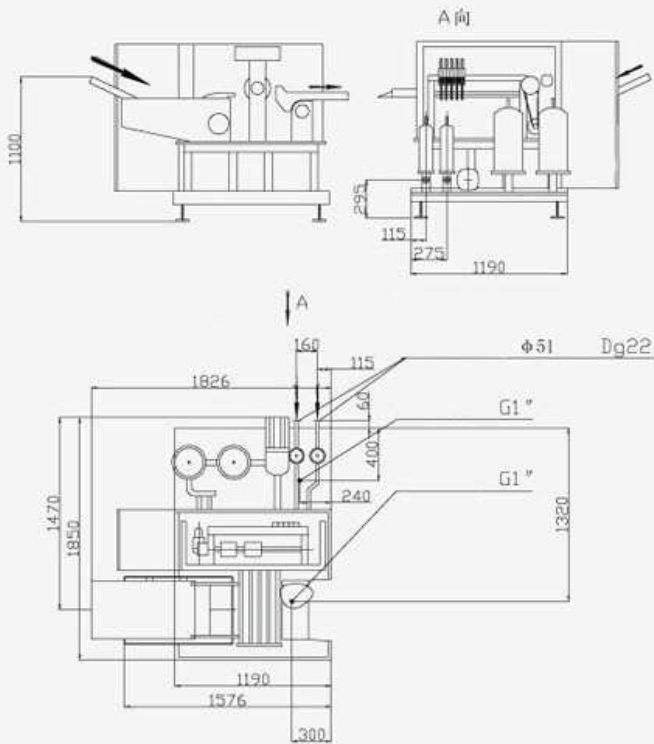


ACQ-I型

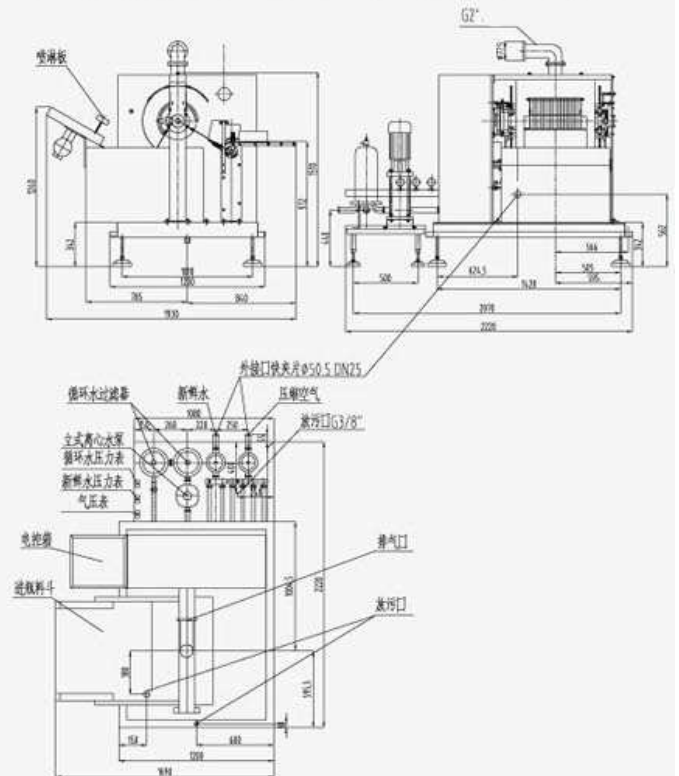


ACQ-II型

ACQ-I ampoule ultrasonic cleaning machine layout diagram



ACQ-II ampoule ultrasonic cleaning machine layout diagram



## ACQ

Series of horizontal ampoule ultrasonic bottle washing machine

### Product Elucidation:

The ACQ automatic bottle washing machine is a new ultrasonic Bottle washing machine developed by our company based traditional drum bottle washing machine. Through bottle feeding net belt mechanism, ampoule will receive stable impetus and within two times of traditional ultrasonic time, to make bottles well sequenced and arranged by swing bottles mechanism, and make ampoules enter into pins smoothly for interior surface water, gas cycling cleaning procedure by upside bottle mechanism.

### Applications:

The machine is in horizontal rotating drum structure, with ultrasonic cleaning process and water pressure spraying cleaning process combined, in unique spraying pin roller structure. The rollers on spraying pins are composed of 8 axles rotating; each spraying pin is commonly controlled by a mechanism in an axial angle, to maintain the best working angles in various positions. Guide rods are installed on each rotating axles, to make ampoule enter into a pin smoothly, and complete all cleaning procedures smoothly, and make ampoule enter into and exit from bottle mechanism guided by the guide rod. Each pin is positioned in an effective position and is kept in ideal working angle. The structure reduces ampoule quantity, and simplifies mechanism, while bottle washing quality is improved; in a same time, it makes production, operation, trial commissioning and maintenance much more convenient, with good cleaning effect, fully complying with GMP standards.



Main technical specification

Model	ACQ-I			ACQ-II		
	1-5ml	10ml	20ml	1-2ml 40Needle	5-10ml 27Needle	20ml 22Needle
Production capacity	8000-18000pcs/h	8000-12000pcs/h	6000-8000pcs/h	25000-30000pcs/h	10000-25000pcs/h	10000-15000pcs/h
Fresh water	0.3-0.4MPa			0.35-0.45MPa		
Consumption	0.6m <sup>3</sup> /h			1m <sup>3</sup> /h		
Circulation	0.3-0.4MPa			0.35-0.45MPa		
Compressed air	0.45-0.6MPa			0.35-0.45MPa		
Production capacity	60m <sup>3</sup> /h-100m <sup>3</sup> /h			100m <sup>3</sup> /h-120m <sup>3</sup> /h		
Main motor	0.75kW			1.5kW		
Water pump	1.5kW			1.5kW		
Heater	9kW			9kW		
Ultrasonic set	1.2kW			1.5kW		
Overall dimensions	1300x1900x1400mm			1930x2220x1510mm		
Net weight	1800kg			2600kg		