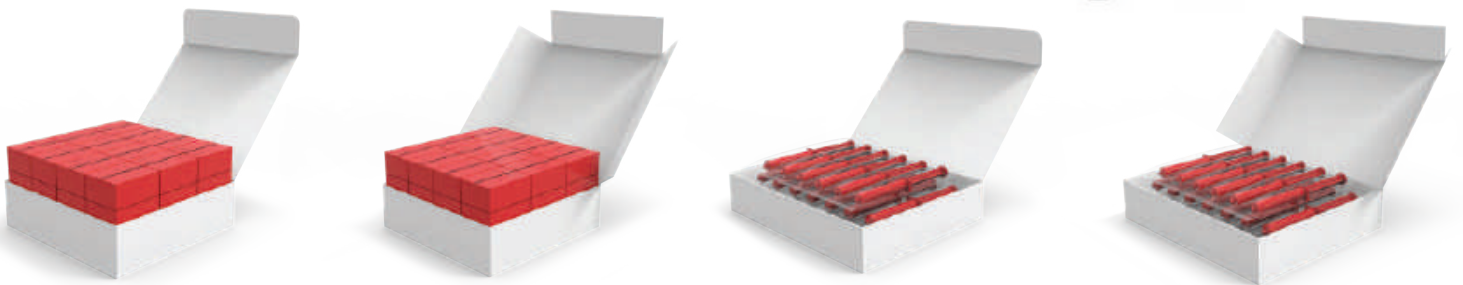


TT-912™

TRI-SEAL GLUE/TUCK
CARTONER



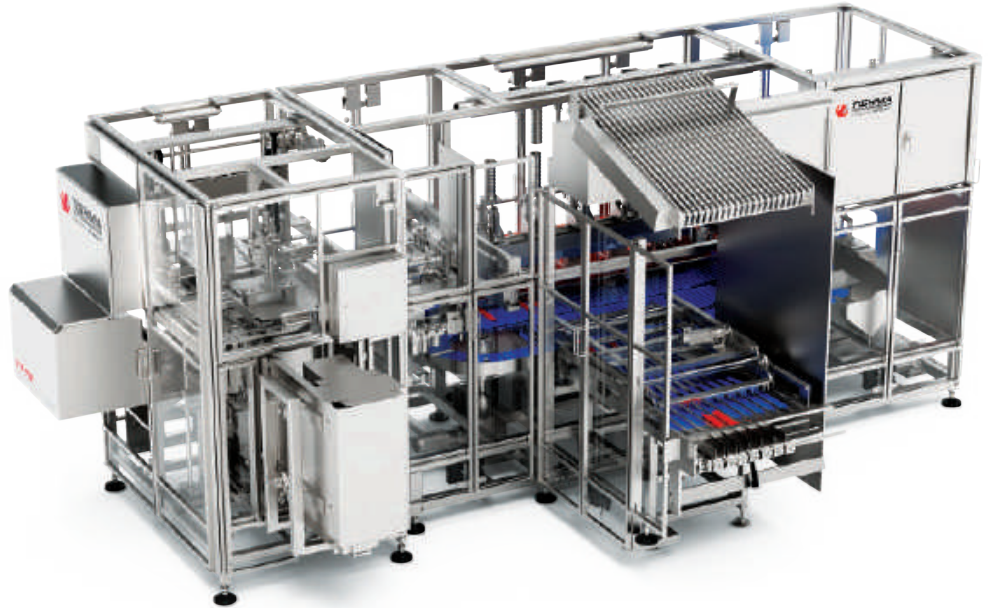
Built solid



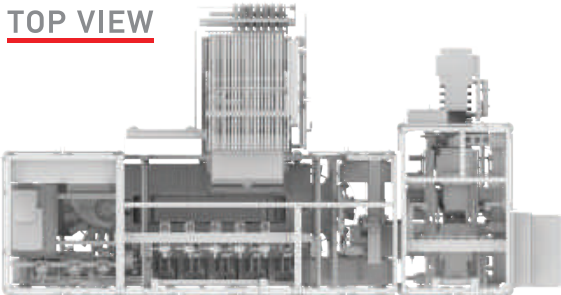
With fully integrated tri-seal and flat-blank systems and modules with positive carton control TT-912 reflects a new approach to automated flat blank cartoning. The TT-912 series offers continuous motion, integrated systems or modules featuring positive carton control and on-demand computer scale interfacing. High efficiencies, less waste and more sanitary operations; Discover the new design approach to automated, totally controlled flat-blank and tri-seal cartoning.

KEY FEATURES

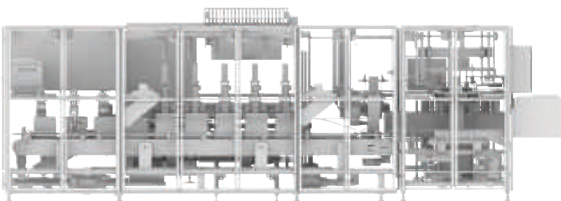
- TRI-SEAL AND FLAT-BLANK SYSTEMS
- COMPACT FOOTPRINT
- QUICK CHANGEOVER



TOP VIEW



SIDE VIEW



SPECIFICATION

MODE	Continuous or Intermittent Motion
CARTON POCKET CENTER	10, 15, or 18 Inches
SPEED	Variable, up to 135 cartons/minute. Depending upon application
CARTON FEED	Powered magazine with reciprocating feeder
CARTON FORMING	Overhead traveling mandrels or carton erector interface
CARTON POCKET POSITIONING	Mechanical
CARTON SEALING	Hot melt glue, flame, hot-air, or tuck closing
CARTON CLOSING	Stationary and mechanical plows
FRAME	Welded tubular stainless steel. Hinged cover panels with safety interlocks.
DRIVE	Servo drive, with line shaft
CONTROLS	Allen Bradley PLCs and electrical components
DIMENSION	Request specific model floor plan

QUALITY MEANS EFFICIENCY