

# Apollo HP 2.5 TIJ Technology



[www.buskro.com](http://www.buskro.com)

**BUSKRO**  
Built for today | Designed for tomorrow

With over 40 years of knowledge and experience, Buskro has become the trusted specialist in inkjet systems.

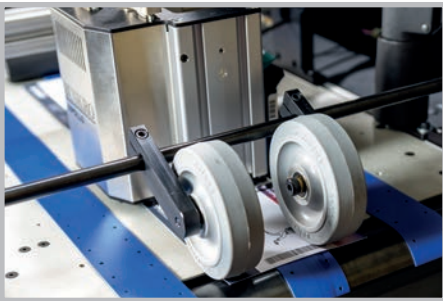
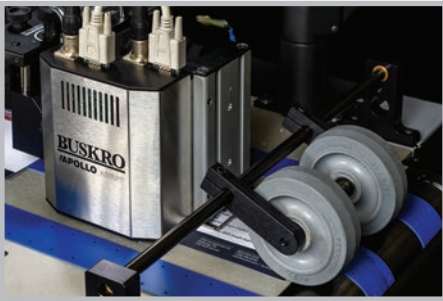
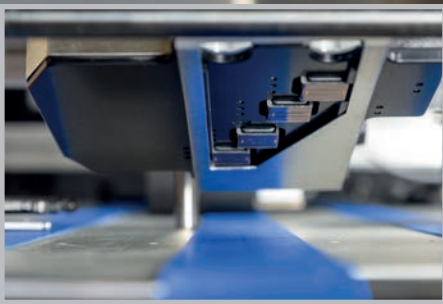
# The Affordable High-Resolution Inkjet



Powerful system controls, outstanding print quality, and easy operation – this true production print system is ideal for a broad range of variable digital printing applications. Based on HP's proven TIIJ 2.5 technology, Apollo produces high-quality images with print resolutions from 110 to 660x600 dpi. Choose from a variety of HP inks to produce dark, crisp images on a wide range of substrates. With Apollo's easy pen replacement, quickly change inks to maximize your production

up-time, and apply the appropriate ink formulation to suit your applications.

From simple addressing to complex imaging, Apollo does it all! Through years of refinement and robust design philosophy, Buskro's solid construction from top to bottom, combined with our proven Compose IQ, has delivered over 20 years of customer experience and satisfaction. Buskro's Apollo family of products offers the most robust, production-oriented TIIJ 2.5 print system available today.



## HP PRINT TECHNOLOGY

The extensive Apollo print-head suite, built on HP TIJ 2.5 ink pens, allows you to configure and designate a system that works best to suit your printing needs. Apollo print system modularity, along with its open architecture, permits print heads to be added as needed, allowing for increased print capacity and growth as your printing requirements expand over time.

- » Print heads available from 1" (25mm) to 4" (100mm)
- » Print array combinations up to 16" (400mm) of vertical print
- » Image lengths from ½" (12mm) to 39.5" (1070mm) at up to 600x660 dpi
- » Print speeds from 0.5m/s (660 dpi) to 2.8m/s (110 dpi)
- » Rugged print-head mount providing ease of maintenance and accurate print positioning
- » Apollo 4C print head available in 1" (25mm) for stunning colour images, text, and drawing objects

## COMPOSE IQ STANDARD APPLICATIONS

A proven, stable performer, Compose IQ, the industry's original Windows-based inkjet operating platform has set the standard for inkjet controllers for over 20 years and continues to offer all of the leading features that make it ideal for many cut sheet or web printing applications, including: direct mail, packaging, pharmaceutical, narrow and wide-web, ticket, tag, labelling, and transactional forms.

- » Windows-based 64-bit operating system
- » Operator, Setup, Layout, Diagnostic windows
- » Rotatable True-Type text, graphics, and barcodes
- » Fixed and variable graphics including: TIFF, JPEG, BMP, PDF, WMF

- » 1D and 2D barcodes including: Code 128, 2 of 5, 3 of 9, QR, Datamatrix, IMPB, GS1, and global postal barcodes
- » Data file formats including: fixed, delimited, database, Access, Excel, and other formats
- » Ink-cost calculator, record status display, search tools, and reprint capabilities
- » Preparation and storage of job audit and log files

## COMPOSE IQ ADVANCED APPLICATIONS

Compose IQ is also equipped with optional features that provide the peace of mind you need for real-time product tracking, and matched print for those more complex applications often required in today's digital printing environments. This includes:

- » **Read/print.** Read a unique identifier from a host document, look up associated record information, and securely print an image on the corresponding product
- » **PDF work flow.** Process, RIP, and print variable PDF images supplied from a PDF file
- » **Multi-zone printing.** From simple to complex production lines, track individual products (in up to 8-independently-driven zones), print matched images in multiple locations (in one or more of these zones)
- » **Product inspection and verification.** After print completion, interface with a camera or barcode reader, inspect or verify the printed image. Divert and re-order failed images to ensure job completion integrity
- » **Combo system.** Pair Apollo print heads with other available Buskro print technologies such as Atlas and Aurora to add spot colour, specialty inks for security, or the occasional requirement for expanded print capacity



# Apollo HP Specifications

## APOLLO HP

MODELS	1600	2600	3600	4600
Print Technology	HP TII 2.5 DOD; 30 ng drop; 12 KHz			
Print Swath	1" (25mm)	2" (51mm)	3" (76mm)	4" (102mm)
Vertical DPI	600			
Horizontal DPI	110, 165, 220, 330, 440, 660			
Speed	From 90 FPM (0.46 m/s) to 550 FPM (2.76 m/s)			
Ink Capacity	HP45A Cartridge (42mL) Ink Delivery System (350mL)			
Ink Type	Water- and solvent-based formulations			
Specialty Inks	Invisible, IR, MICR			
Ink Delivery System	4-channel, regulated, pumped, level sensing			
Compose IQ Options	Read/print, partial match, multi-zone tracking and printing, verification, combo system, PDF work flow			

## APOLLO HP INKS

NAME	TYPE	SUBSTRATE	FEATURES
HP Black 2510	Water-based	Porous	Extended decap time. Reliable intermittent printing with high optical density
HP Black 2520	Water-based	Porous	Dark black ink. Produces superior dark, high-resolution images
HP Black 2531	Dye-based	Uncoated, matte, glossy	Extended decap time. Low maintenance and fast drying ink for high-speed printing
HP Versatile Black	Water-based	Porous and coated	Standard. Dark, crisp print quality at high speeds with heat assistance
HP Black 2580	Solvent	Uncoated, matte, glossy	Fast dry. High-speed operation for challenging substrates, often without heat assistance
HP Durable Black	Water-based	Porous and semi-porous	Durable. High-quality print with decap time moderate across a wide range of substrates

## Features

- » Apollo print heads available in 1" (25mm), 2" (50mm), and 4" (100mm) modules
- » Combine print heads to form a print array up to 16" (400mm) of vertical print
- » Variety of inks for spot colour, porous, and coated substrates
- » Ability to make micro-alignments for seamless print
- » Simple maintenance and ink cartridge replacement
- » Modular design allows for easy system upgrades
- » Dark, crisp images printed up to 660x600 dpi
- » Ability to rotate print, graphics, and barcodes to allow for print flexibility
- » Great for addressing, tickets, transactional forms and labelling applications
- » Can be paired with a Buskro or third-party transport system
- » Ability to combine the Apollo print head with other proven Buskro inkjet systems

## ABOUT BUSKRO

Founded in 1976, Buskro has evolved into an industry leader in the design and manufacture of high quality printing, tabbing/labelling and card processing equipment to meet a broad range of customer needs. Innovation is the key to everything we produce. Our approach of using the latest technology, along with an open architecture, allows our products to meet your current needs and adapt to your future requirements. Buskro equipment features heavy-duty construction from top to bottom, plus design details that promote years of trouble-free operation. Our commitment to

innovation has produced solutions that have not only set the standard, but raised the bar for over 40 years. Working with Buskro's global network of distribution partners, we take pride in providing quality service and support for all of our products, including our legacy technologies. When you consider your needs – the ones you face today and the unknown challenges of tomorrow, and then compare Buskro's total value proposition of price, flexibility, quality and durability... Buskro is hard to beat!

