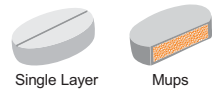




accura ACT-II

HIGH SPEED SINGLE
ROTARY TABLET PRESS

31 STN "D" Tooling / 37 STN "B" Tooling / 45 STN "BB" Tooling
With pre compression of 10 tons. & main compression of 10 tons.
WITH INTERCHANGEABLE TURRET
AUTO WEIGHT THROUGH COMPACTION FORCE CONTROL
AUTO TABLET REJECTION THROUGH COMPACTION FORCE CONTROL

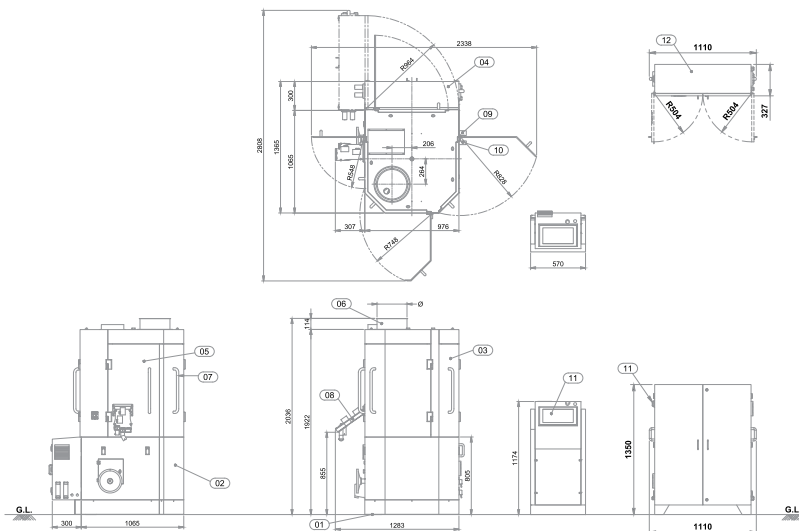


PRODUCT SPECIFICATIONS			
TYPE	ACT-II-31	ACT-II-37	ACT-II-45
Number of Station	31	37	45
Type of tooling (As per EU1)	D	B	BB
Output/tables/hour (Min/Max.)	18,600 / 1,39,500	22,200 / 1,66,500	27,000 / 2,02,500
Turret RPM (Min./Max)	10/75		
Max. operating pressure-Main (kN)	100		
Max. Operating Pre. Pressure-Tamp. (kN)	100		
Max. Tablet Diameter (mm)	25	16	11
Max. Tablet Thickness (mm)	8.5		
Depth of fill (mm)(With Three Different Lower Track)	(1) 3 - 10 (2) 8.5 - 14 (3) 12.5 - 18		
Upper Punch entry Main (mm)	1 To 6		
Upper punch entry Pre-compression (mm)	1 To 6		
Main Electric Motor (kW/hp)	7.5/10 x 1440 RPM		
Main Press Roll Servo Motor (kW/hp)	0.75/1.0 x 3000 RPM		
Pre. Press Roll Servo Motor (kW/hp)	0.75/1.0 x 3000 RPM		
Weight Adj. Servo Motor (kW/hp)	0.75/1.0 x 3000 RPM		
Feeder Electric Motor (kW/hp)	0.37/0.50 x 1365 RPM		
Turret Lifting Electric Motor	0.75/1.0 x 1365 RPM		
Auto Lubrication Pump Electric Motor (kW/hp)	0.12 / 0.16 x 1440 RPM.		
Hopper Capacity	22 Litres		
Overall dimensions (Close guard) cm	128 W x 136 L x 204 H		
Overall dimensions (Open guard) cm	234 W x 281 L x 204 H		
Case dimensions - cm	200 W x 205 L x 220 H		
Net weight (kg)	Approx. 3000		
Gross weight(kg)	Approx. 3500		
Utilities :	1) Suction Air :- 300 CFM 2) Compressed Air :- 7 Kg/Sq.cm (7 Bar) 3) Power Supply :- (a) 415 V,3 Phase, 50 Hz (b) 480 V, 3 Phase, 60 Hz (c) 220 V, 3 Phase, 60 Hz 4) Power-Total (kw/hp) :- 10.99kW/14.66hp		

* Depending upon material characteristic & available room atmosphere only.

NOTE : DUE TO CONTINUOUS IMPROVEMENTS IN THE MACHINERIES, SPECIFICATION OF THE MACHINERIES IS SUBJECT TO CHANGE WITHOUT ANY PRIOR NOTICE.

Pre-pressure and Main pressure could be changed depending on the size of the compress and filling depth, powder or granulation. It is dependent on the physical specification of the used material for the compress.
The above specification is the subject to change without prior notice for the technical development.
It is Recommended not to use large depth of fill, minimum tablet thickness and maximum compression pressure for maximum performance consistently. Technical rights to change catalogues, specifications and features are reserved with the manufacturer. Actual output may vary against indicated output on the product under compression and RPM on lower side.



MANUFACTURED BY:



www.fluidpack.net

Factory & Regd. Office: I-4116, PHASE IV, G.I.D.C., VATVA, AHMEDABAD-382 445. (INDIA)
Phone: +91-79-40237888, 2584 0777, 2584 0888, 2584 0999 **Fax:** +91-79-2584 0888.
Mobile: Mr. M.M. Panchal : + 91- 098250 33305 Mr. Bipin Chawda : +91- 093275 78371
E-mail: info@accuratabletpress.com, fluidpack@accuratabletpress.com, fluidpack83@gmail.com

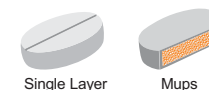
Fluidpack



accura ACT-II

HIGH SPEED SINGLE
ROTARY TABLET PRESS

31 STN "D" Tooling / 37 STN "B" Tooling / 45 STN "BB" Tooling
With pre compression of 10 tons. & main compression of 10 tons.
WITH INTERCHANGEABLE TURRET
AUTO WEIGHT THROUGH COMPACTION FORCE CONTROL
AUTO TABLET REJECTION THROUGH COMPACTION FORCE CONTROL



MANUFACTURED BY:



www.fluidpack.net



accura ACT-II

HIGH SPEED SINGLE
ROTARY TABLET PRESS

31 STN "D" Tooling / 37 STN "B" Tooling / 45 STN "BB" Tooling
With pre compression of 10 tons. & main compression of 10 tons.
WITH INTERCHANGEABLE TURRET
AUTO WEIGHT THROUGH COMPACTION FORCE CONTROL
AUTO TABLET REJECTION THROUGH COMPACTION FORCE CONTROL

SALIENT FEATURES

- SINGLE ROTARY TABLE PRESSES WITH INTERCHANGEABLE TURRET.
- In compliance with cGMP.
- With Motorized Pre compression of 10 Tons. (100 KN)
- With Motorized Main compression of 10 Tons. (100 KN)
- With Motorized Dozzer, for precise depth of fill adjustment.
- With Industrial PC, having 15" colour touch screen.
- With Load cell at Pre-Compression & Main-Compression.
- Machine is Three sides open with upper Guards.
- With AC Variable Drive
- Three paddle Zero Clearance Force feeder.
- Vibration free and easy to operate at 75 RPM.
- Sliding type Pre & Main upper pressure roll assembly.
- With sampling & startup rejection.
- With Sturdy Structure design.
- Motorized inbuilt turret changeover facility.
- Turret Resting on separate Trolley.
- Any Turret of D-B-BB Tooling can be fitted.
- Auto weight through compaction force control
- Auto tablet rejection through compaction force control
- Upper punch penetration at Pre & Main.



Software part of ACT II

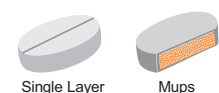
- Auto weight control available through Compaction force.
- System is 21 CFR part 11 Compliance.
- Multi users password and user authorization.
- Individual users access rights.
- Encoder for counting all the parameters.
- Individual tablet rejection(beyond weight) through compaction force.
- "accura" mode for minimize weight variation at higher speed.
- 15" touch screen IPC for operating system.
- Feeder synchronization.
- Initial tablet rejection during start / stops.
- Production Mode / Set up mode.
- Manual Run/Jog Run / Auto Run.
- Pre compression punch force. (Individual station)
- Main Compression punch force. (Individual station)
- Auto Sampling Mode.
- Based on Time/Punches or No. of tablets.
- Auto Lubrication.
- Recipe creation/download/Edit option.
- Various type of prints reports.
- Audit reports and history.
- Individual punch force details.
- Auto printing option.
- Server integration option available.

Safety features of ACT II

- Emergency Stops alarm.
- Motors overload precaution.
- AC VFD overload precaution.
- Servo motors movement notification.
- Servo motors safety precaution.
- Fill cam identification.
- Tablet Rejection control alarm.
- High Tablet rejection notification.
- Guards interlock.
- Lubrication oil level identification
- Low powder level
- Encoder position disturb alarm.
- Individual compaction force higher alarm.
- Hand wheel guard notification.

Benefits of SCADA :

- 1). Report Generation in PDF
- 2). Use of unlimited storage of PC (Particularly) 'n' number of recipes
- 3). Connectivity to any type of Printer.
- 4). Graphical system representation
- 5). Real time trending
- 6). Alarm History.
- 7). Audit trail
- 8). Advanced security Level



www.fluidpack.net

Fluidpack

TURRET INTERCHANGE

Looking to the increasing demand from pharma Industries, for this type of mechanism, Fluidpack's ACCURA ACT - II single rotary Tableting Machine is manufactured / Crafted with great precision and with easy & specially designed turret device, It can be operated through the soft push button on Touch Screen. Keeping in mind the highest safety for machine there are upper & lower limits, on the travel range of the turret lifting rail, which prevents any damage caused by the non-proper operation. Turret is lifted up & down, from the top of it, by connecting it with a cantilevered, lifting linear sliding rail mechanism. Turret, then after, can be pulled out and can be unloaded on specially designed trolley. Another Turret can be immediately replaced by this mechanism on the machine with a very small time segment.



AWC - (Automatic Weight Controller) (an accura advantage)

- The range of AWC is divided such as control, reject and data store.
- Graphical appearance of the value of pre & main pressure.
- Display of figure and graph both for the value of pressure on each individual punch.
- Indication / Display, of any no. of the selected punch & the respective value of pressure applied on it.
- Filling depth can be adjusted, if the amount of filled powder is exceeded or shortened beyond preset value.
- The faulty tablet will be rejected automatically.
- All data like production, rejection samples taken. Batch time segment etc. is recorded.
- Discharge chute with three compartments like reject, good & sampling gate.
- The set parameters and the actual parameters can be visualized on the screen, at the same time.

accura ACT-II



www.fluidpack.net