

INSPEK Food Safety Inspection Pack



Premier Tech World Headquarters

Premier Tech Chronos
1, avenue Premier
Campus Premier Tech
Rivière-du-Loup (Québec)
G5R 6C1 CANADA
☎ 1 418 868-8324
☎ Toll-free (USA/CAN) : 1 866 274-1287

Regional Offices and Manufacturing Plants in America

1881 West North Temple Salt Lake City, UT 84116 United States	35, boulevard Industriel, C.P. 5617 Caraquet, NB E1W 1A9 Canada
3101 Hayneville Rd Montgomery, AL 36108 United States	Avenida José Alves de Oliveira, 710 Jundiaí - SP Brazil



The information contained in this brochure is based upon the latest information available at the time of publication and is designed to provide you with a general introduction to our products. We make no warranties or representations as to its accuracy. We are continually updating and improving our products and reserve the right to amend, discontinue or alter specifications and prices without prior notice. Premier Tech is a registered trademark of Premier Tech Ltd. © Premier Tech Ltd. 2017

PTCHRONOS.COM



PTCHRONOS.COM

The most advanced vision system

On the cutting edge of technology, the INSPEK is a true innovative food safety inspection system that assist the automation equipment itself by inspecting your tray packs beyond expectation. The INSPEK consist of three main actions it first takes images of what's on the conveyor, then analyze all the details of the package and finally guide the

Identify: Using line scan cameras with 8k of resolution each, it will build unprecedented 5 megapixels' pictures The system includes three cameras, one for each viewing angle (top, bottom and through) giving access to 15 megapixels of data for a single tray pack. Optimized built-in lightning ensures great quality on every picture, making all pixels useful for more efficiency.

Inspect: Combined to the Halcon Vision Library tools, this good-quality data makes it easy to define precisely several parameters for each inspection characteristics. It's now possible to define up to 30 inspection criteria and reach a

robot to pick and pack the product or reject the package that has defects.

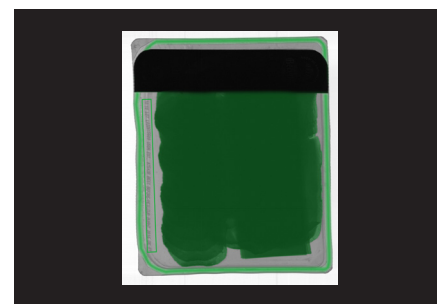
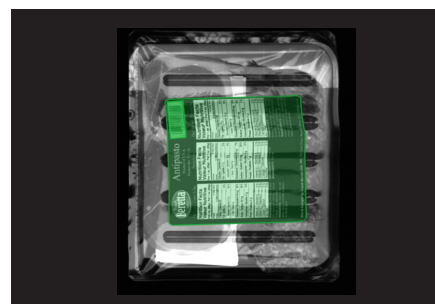
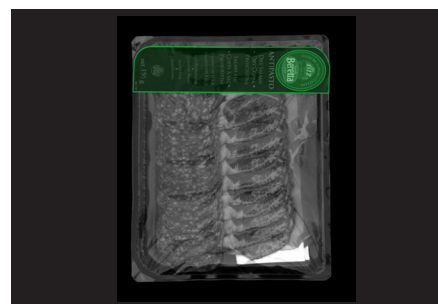
The INSPEK technology helps you reach higher results and tighter fault detection, achieving 100% quality control on your product line.

high-speed rate of 300 packs a minute. The picture with the result of the inspection (Correct/Defective) is displayed on a 19 inches' interface and can be shared through Ethernet I/P

Communicate: Integrated with Premier Tech Chronos RPK-500 Series Robotic Packing cell, the INSPEK will indicate the inspection result to the robot, allowing defective tray packs to be rejected by the packing system. A summary of this inspection results as well as statistics on defective tray packs would then be available on the RPK HMI interface. The INSPEK can then be viewed as a new module perfectly integrated to your standard automatic packing operations.

Features and Benefits

- Top & bottom package inspection
 - Label (presence, validation, skewed, folded)
 - Perfect seal (Presence, skewed, folded)
 - Best before date
 - Safety seal position/presence
 - Add stickers
 - Bar code presence/position/reading/validation
 - UPC code validation
- Seal inspection
 - Product in seal
 - Wrinkles in seal
 - Air, liquid, bubbles in seal
 - Uniformity of the seal jaws stamping
- Sanitary design for food safety with stainless steel construction and wash down standards
- Enable traceability for the seal integrity, the top and the bottom labels inspection, Possibility for images backup for all tray packs including a time stamp
- Production and machine reports for fault and operation logs
- Offline configuration from backup image and user friendly HMI with real time display
- Small footprint, less than 5 feet
- Real Multiline on a single conveyor
- No trigger required. Unit may be placed randomly on the conveyor
- UPC code validation



Production Rate

Up to 300 units per minute per conveyor*

*Depending on product and number of conveyors

Technical Data

Footprint:	54" × 30" (1.37 m × 0.76 m)
Electrical requirements:	120VAC/1PH/60HZ/15AMP
Operating pressure:	90 psi (6 bar), 10 SCFM
Ambient temperature:	32°F – 95°F (0°C – 35°C)
Meets Robotic Safety Standards:	CSA Z432

