

SIEMESH AUTOMATION
PRUDENT PACKAGING SOLUTIONS

SEALPRO TOTAL



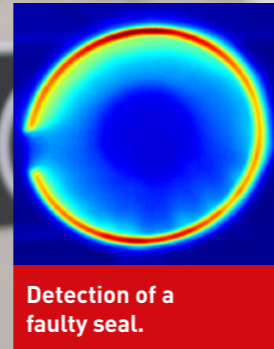
World's first thermo sealer with 100% thermal imaging inspection technology

- Applicable to containers of most common shapes and sizes in the food & beverage, cosmetics, nonwovens, pharmaceuticals and health & beauty industries
- Throughputs offered from 20 to 200 products per minute
- Inspection is live, 'hands off', non-invasive and non-destructive

OVER **2** YEARS OF
EXCELLENCE

Let us build your vision

The **SealPro Total** automatically cuts the sealing laminate according to the product size and thermo seals it accurately in place. Total quality control ensures only products that are 100% sealed are delivered.



SEALPRO TOTAL

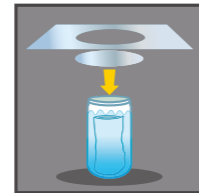
Shemesh Automation offers a wide range of versatile and fully programmable seal, seal-fill, or seal-fill-cap machines in either in-line or monoblock configurations with throughputs in the 1,000-12,000 pph range.

- For the first time in the industry: 100% in-line sealing integrity inspection for heat sealed packages.
- The sealers are offered as either as Cut & Seal solution to seal and cut film coming from a reel or as a Seal Only solution from pre cut lids.
- Products can be formed cups (made of PS, PP, PET, APET CPET, aluminium and coupled cardboard), trays, bags or containers (made of plastic, glass and metal).
- Solutions are available in Sealing Only or with vacuum/gas facilities to extend the product shelf life.



Quick fact sheet

- Fully automatic
- Throughput models offered: 20, 60, 120 & 200 products per minute SP
- Supporting cups, trays, conic, oval and round containers
- Minimum foil waste between batches of 15-20mm, reducing waste
- Tolerance: margin 3-4mm, trim 10mm, reducing waste
- Sub 20 minutes changeover, reducing downtime!
- Sanitary design
- Sealing strength tuning and fine-tuning per each sealing head may be done separately via the HMI
- Explosion-Proof, Lid-Intrusion and 'Breathing Foil' upgrades available
- Over 60 machines sold
- Offers a total inspection for 100% of products — leaving the machine completely sealed



The Shemesh thermo sealing application – also available in a monoblock configuration.

Because sampling isn't enough

For the first time in the industry, Shemesh Automation, in collaboration with a team of dedicated engineers, presents the **SealPro Total** – here's what the 'total' stands for:

The **SealPro Total** is the first 100% in-line inspection system for heat sealed packages that is non-intrusive and does not result in production slowdown.

This represents a quantum leap forward from sampling to monitoring every single package in real time. The system's live analysis provides insight into the quality of the sealing process, enabling operators to detect and immediately amend issues should they occur.

How does it work?

The **SealPro Total** combines thermal imaging technology developed by a team of dedicated engineers in collaboration with Shemesh Automation for its heat sealing product portfolio.

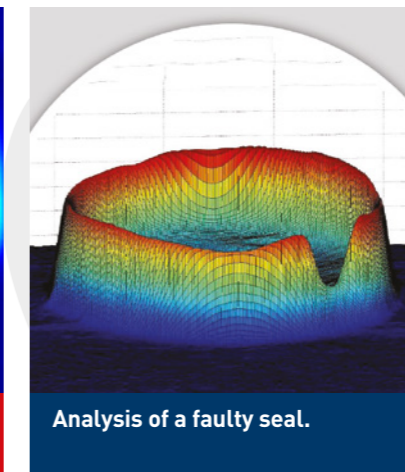
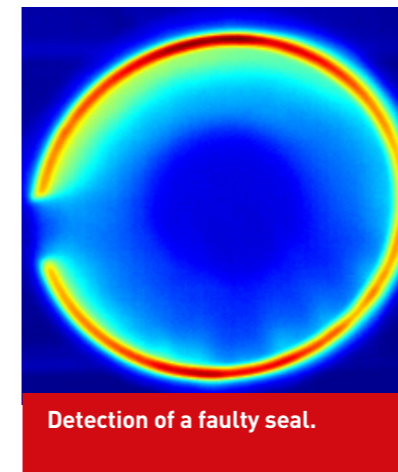


Utilising sophisticated analysis algorithms, the **SealPro Total** provides real time integrity monitoring of every single package or container on the packaging line – at the speed of the machine throughput.

Inspection is 'hands off', non-invasive and non-destructive. Nothing is projected at the product; the **SealPro Total** reads and analyses the inherent heat signature of the seal (which is amplified directly after the sealing process).

Why do I need the SealPro Total?

- Ultimate **quality assurance** of heat sealed packages – **100% inspection**
- **Unprecedented process control** – Discover and fix potential problems in real time
- **Fast** – No slow-down of the packaging line
- **Non-interfering, non-degrading inspection** – 'hands off' inspection
- **Designed for simplicity** – the system is small and integrates seamlessly with the existing packaging process
- **Easy GUI**, simple user interface
- **Reduce customer complaints**
- **ROI** – cuts costs inherent in sampling methods, minimises waste (time, work-backs, materials and labour)
- Reports enable **statistical process control** of the sealing process over time
- **Brand integrity** – assurance that brand standards are upheld on the packaging line



Machine specifications

CONTAINER

Machine throughput	20-120 canisters per minute depending on SealPro model
Shapes supported	Round, oval, conic, square, rectangular, or special custom
Major applicable	Cosmetics, Food, industries Pharma, Health & Beauty

WASTE CONTROL

Tolerance	Margin 3-4mm trim (including margin) 10mm
Minimum foil waste, between batches	15mm-20mm

SEALING FOIL

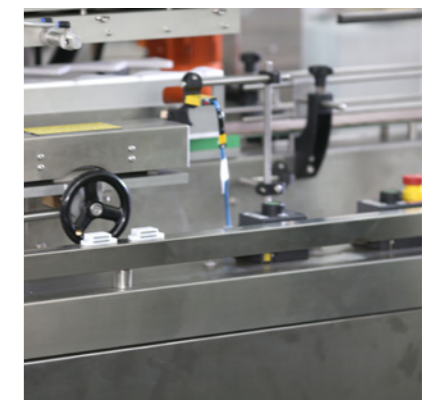
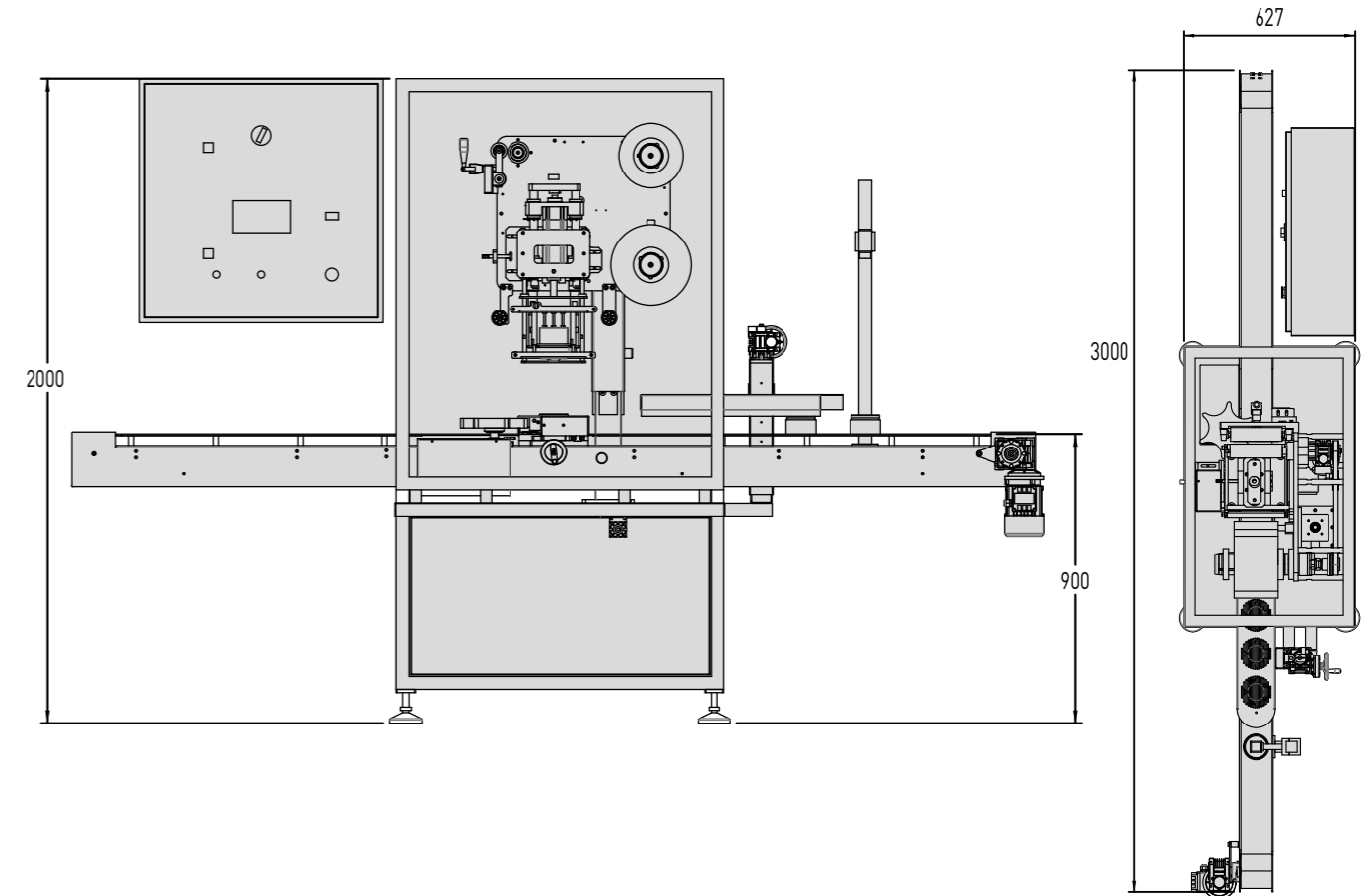
Foil Type	Most of the industry standard PE based sealing laminates
Max Width	160-200mm depending on SealPro model
Roll Max Diameter	300-450mm depending on SealPro model
Roll Core Diameter	3"

MACHINE QUALITY CONTROL

Completely integrated 100% seal integrity inspection
Real time
100% inspection
Non-intrusive, non-destructive

MACHINE CONTROL

Safety controls, emergency stop & doors	Wired through category 4 controller
HMI Display & PLC	Siemens
Sensors	Omron or Sick
Voltage	US: 3x 208V, 16A Europe: 3x 380V, 10A
Pneumatics	Festo or SMC



Global representation

Shemesh Automation boasts over 25 years' experience catering to global market leaders across many market sectors. We collaborate with teams on complex Fortune 500 projects and have gained not only a proven and trusted network to put at your disposal but also invaluable knowledge to help drive your projects.

Our global network of sales representatives and After Sales service specialists offer you flexible and efficient support. We share our knowledge to guarantee the maximum productivity of your machinery and our worldwide service network of qualified technicians ensures a fast solution whenever and wherever you need it.

Israel

Shemesh Automation Israel
Contact: Mr. Ofer Ben Yishay
Tel.: +972 3 550 9946
ofer.b@shemeshautomation.com

United Kingdom

Shemesh Automation UK
Contact: Mr. Gary Wilson
Tel.: +44 207 887 6004
gary.w@shemeshautomation.com

Contact: Mr. Stuart Jones
Tel.: +44 207 887 6004
stuart.j@shemeshautomation.com

France

Shemesh Automation France
Contact: Ms. Nelly Desbiens
Tel.: +33 6 15 21 04 09
nelly.d@shemeshautomation.com

North America

Shemesh Automation NA
Contact: Mr. Jay Roth
Tel.: +1 717 637 5991
jay.r@shemeshautomation.com

Asia (ex Japan and Indonesia)

Shemesh Automation Asia
Contact: Mr. Charles Yip
Tel.: +852 28909218
charles.y@shemeshautomation.com

Japan & Indonesia

Shemesh Automation Japan & Indonesia
Contact: Mr. Kentaro Taguchi
Tel.: +81 3-3278-6122
kentaro.t@shemeshautomation.com

Australia

Shemesh Automation Australia
Contact: Mr. Jim Simpson
Tel.: +61 447 676 121
jim.s@shemeshautomation.com

Latin America

Shemesh Automation LATAM
Contact: Mr. Ricardo Leon
Tel.: +57 1 812 9891
ricardo.l@shemeshautomation.com

Global Sales

Shemesh Automation
Contact: Mr. Shai Shemesh
Tel.: +44 207 887 6004
shai.s@shemeshautomation.com

SealPro120 from Shemesh Automation for throughputs of up to 120 products per minute, also available as a **Total** upgrade.





Shemesh Automation UK. Tel. +44 207 887 6004
Shemesh Automation Israel. Tel. +972 3550 9946
www.shemeshautomation.com

