



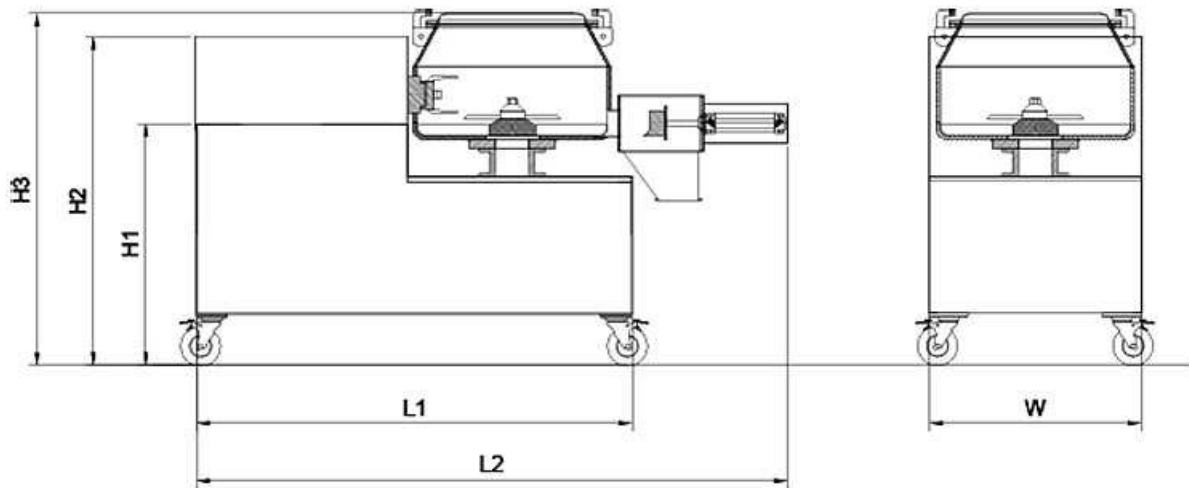
Super Mixer CH-SM



Feature:

- Super Mixer is used in pharmaceutical, food and Chemical for the powder and granulation.
- Follow the regulation of cGMP, PIC/S, GMP.
- High uniformity of mixing, Even with big difference of density of mixture can mix uniformly.
- Short time, high efficiency.
- Unique design of the air seal, the filtered compressed air is introduced into the air seal system. It prevents the powder from falling into shaft and chopper, which may pollute the product.
- The clearance between agitator and the bottom of mixing bowl is only about 1 mm, no dead angles, less residue.
- Can in accordance with raw materials characteristic or special process requirements, it can input many different group of process parameter; After the conditions are all set up, it can do full-automatic procedure control.

Line Graph:



Specification:

Model	Unit	CH-SM-100	CH-SM-150	CH-SM-300	CH-SM-600	CH-SM-1000	
Full Capacity	L	100	150	300	600	1000	
Working Temperature	L	40	60	120	240	400	
Main Drive	Kw	5.5	7.5	11	22	37	
Main Drive	Rpm	175	175	175	100	80	
Chopper Drive	Kw	2.2	3.75	5.5	11	18.5	
Chopper Drive	Rpm	3000					
Compressed Air Pressure	Mpa	0.2~0.4					
Dimensions	W	mm	930	930			
	H1		1250	1250			
	H2		1350	1350			
	H3		1650	1650			
	L1		2300	2300			
	L2		800	800			